



# VOICE OF THE ILWU

HONOLULU HAWAII  
© 2009 ILWU  
LOCAL 142

Volume 49 • No. 5

The VOICE of the ILWU—Published by Hawaii Local 142, International Longshore & Warehouse Union

September/October 2009

## Notice of ILWU Local 142 Election

This issue of the Voice of the ILWU is your official notice of the 2009 ILWU Local 142 Election. It contains the positions and candidates who will appear on the ballot and the dates, times and locations of voting for your unit. This issue also contains statements and photographs submitted by candidates.

The dates, times and locations of voting for your unit are listed separately by division—Hawaii, Maui, Kauai, and Oahu—and sorted by unit number. Look up your unit number or company name and take note of the dates, times, and locations indicated for your unit.

For most members, **THERE WILL BE NO OTHER OFFICIAL NOTICE OF THIS ELECTION.** Some units may post this notice on their union bulletin boards, but this is not required for all units. In a few cases,

where there is an error or change in this notice, members may receive an updated notice in the mail. However, for all other members, this will be your only notice of this election.

### Candidate statements

All candidates in the upcoming ILWU Local 142 elections had the equal opportunity to submit a photograph and statement which would be printed in this issue of the VOICE of the ILWU. The deadline for submission was 4:00 pm, September 30, 2009.

The statements were limited to 200 words and those statements longer than 200 words were cut to the last complete sentence.

Otherwise, the content of the statements are printed exactly as received, with no editing for spelling, punctuation, or grammar.

All attempts were made to preserve the physical appearance of the original statements—capitalized words, underlining, boldfacing, italicizing, and centering of text were maintained. However, all statements are printed with the same fonts and font size, except where limited space required a smaller font size.

Some candidates did not submit a statement or photo. Their names are printed and we indicate that they did not submit a photo or statement by the deadline above.

### Elections Committee

The Elections Committee of ILWU Local 142 is made up of one representative from each Division. The current members are Earl Totten from Oahu, Eli Miura from Hawaii, Herbert Kekuawela and Clayton Carvalho from Kauai, and Star Medeiros from Maui.

ADDRESS LABEL



Over 360 ILWU Local 142 members met in Convention from September 15-18, 2009, to make policy, approve programs, and set the direction of the union for the next three years. All actions of the Convention must be reported to the membership and approved by a majority vote.

## 400 meet in 25th ILWU Local 142 Convention

ILWU democracy puts the members in charge of their union. They do this by meeting in Convention to decide the policies and programs of the union, set the finances and budget, and make all other rules which govern the union. The Convention is the highest governing body of the union. It is held once every three years in the month of September.

This was the 25th Convention and it was held from September 15-18, 2009, at the Sheraton Waikiki Hotel in Waikiki, Honolulu. Approximately 367 rank and file members from ILWU units throughout the State of Hawaii attended the Convention. About 39 fraternal delegates (retir-

ees) and guests from Mainland ILWU locals and elsewhere were also in attendance for a total of 406 participants. Maui Division sent the largest group with 95 participants, followed by Oahu with 90, then Hawaii with 67, and Kauai with 35 participants.

The theme of the Convention was "Unity, Equality, and Rank & File Democracy."

The work of the Convention took four days of meetings and discussions to complete. On the first day, delegates worked in one of four committees: Constitution; Officers' Report, Organizing, and Resolutions; Contract Administration; and Pro-

grams, which included membership services, publicity, education, and political action.

On the second day, the Convention adopted 14 constitutional amendments and a budget for the next three years. One amendment to the ILWU Constitution creates a longshore division within Local 142 and another amendment increases dues from 2.0% to 2.5% to help the union get through a financial crisis.

On the third day, delegates approved reports on the work of the union and adopted resolutions. On the fourth and last day, delegates nominated the candidates for the three top officers of the union and

the industrial grouping members of the local executive board. Isaac Fiesta, Jr. and Jason Medeiros were nominated for the office of Local President; Donna Domingo was nominated as Local Vice President; and Guy Fujimura was nominated as Local Secretary-Treasurer.

President Fred Galdones did not run for re-election as he will retire at the end of this year. Kauai Division Director Clayton Dela Cruz will also retire this year. Resolutions honoring the two ILWU leaders were adopted by the Convention.

The actions of the Convention must be submitted to the membership of the union for their approval.

—continued on page15

## Local President



**Local President Candidate  
Isaac Fiesta Jr.**

Brothers and Sisters,  
I am Isaac Fiesta, Jr. I was raised in the small plantation town of Honomu, where I continue to live with my wife and family. In September 1968, I started at Pepeekeo Sugar Company, as a knapsack sprayer ending as garage purchasing clerk.

I am a member in good standing for over 40 years serving as a chief steward, a union safety representative, and Steward Council Chair. In April 1991, Brother Bo Lapenia appointed me as a Hawaii Division Business Agent. The various units I faithfully worked with are: hotels, general trades, supermarkets, healthcare, longshore, and agriculture.

I will strive to preserve wages and benefits under our collective bargaining agreements and humbly ask for your support. If elected, I commit to working with the LEB, LEC, and the Divisions to strengthen our union.

I served on the Hawaii County Planning Commission for five years and the State Land Use Commission for eight years.

My experiences includes 18 years as Business Agent, administrative, PAC, mobilizing, organizing, representing members for workman compensation claims and unemployment hearings, and negotiating first time and re-opening contracts. Organizing is the blood life of our union.

In solidarity, Issac Fiesta, Jr.



**Local President Candidate  
Jason Medeiros**

ALOHA, AS THE GRANDCHILD OF PORTUGUESE AND FILIPINO IMMIGRANTS, AND A CHILD OF VERY ACTIVE UNION PINE-APPLE AND HOTEL WORKERS, MY ROOTS ARE DEEPLY EMBEDDED IN THIS UNION.

IT HAS BEEN SAID THAT A GOOD LEADER WILL ALWAYS REMEMBER THAT HE IS A SERVANT, CURRENTLY, I AM SERVING AS THE CHAIRMAN AT THE GRAND WAILEA HOTEL, AND SERVING AS THE DIVISION PAC CHAIR. I HAVE SERVED AS NEGOTIATIONS CHAIRMAN FOR THE LAST TWO NEGOTIATIONS AT THE GRAND WAILEA. AND NOW I AM ACTIVELY INVOLVED IN INTERNAL ORGANIZING. I BELIEVE THAT IF WE CAN GET BETTER, WE WILL GET BIGGER.

I BELIEVE THAT TOGETHER WE CAN RESTORE THIS UNION TO THE STATUS OF BECOMING THE SOCIAL CONSCIENCE OF THE LABOR MOVEMENT. WE CAN DO THIS BY BUILDING A SOLID RELATIONSHIP WITH OUR COMMUNITY, WE CAN DO THIS BY EDUCATING OUR MEMBERS AND THEIR FAMILIES OF OUR GREAT HISTORY, AND BECOME MORE ACTIVE IN COMMUNITY ISSUES. I BELIEVE THAT WE SHOULD DO AS OUR FOREFATHERS DID BEFORE US, EDUCATE AND MOTIVATE!

MY FATHER TAUGHT ME TO BELIEVE IN THREE THINGS, I BELIEVE IN GOD, I BELIEVE IN MY FAMILY, AND I BELIEVE IN OUR UNION! I HUMBLY ASK YOUR SUPPORT FOR PRESIDENT

## Local Vice President



**Local Vice President Candidate  
Donna Domingo**

I'm very honored and grateful to be given the opportunity to serve as your Vice President of ILWU Local 142. I'm thankful for the support of the rack and file (members) has given me and asks for you continued support in the next 3 years.

I've been a member for 27 years, I worked at the Maui Lu Resort unit 2502 as a cashier, then a lead Front Desk Clerk, in the early 80's I served as a Steward, Unit Secretary Treasurer and the Unit Chair, I also served as a Division Trustee, Local Executive Board Member, the PAC chair for Maui Division, and served in various committees.

The past three years has given me the opportunity to expand my abilities in negotiations, and in the administration of the Union in various capacities.

I am proud to serve in the highest level of our Union. The ILWU has a rich history that we need to preserve, And to continue to uphold the Principles and the Integrity that the ILWU is know for.

We will be facing a lot of challenges in the coming triennium, but together we can see it through.

In Solidarity  
Donna Domingo

## Local Secretary-Treasurer



**Local Secretary-Treasurer Candidate - Guy K. Fujimura**

I am grateful for the opportunities provided to me by the ILWU. I am also grateful for the chance the rank and file have given me to serve them again. Thank you.

I have been a member of ILWU Unit 4402 Love's Bakery since 1974, serving as a steward, Unit Chair and Chair of the statewide bakery negotiation committee. I have been a delegate to International and Local Conventions since 1977. In organizing, I have made house calls, written leaflets and participated in planning. I have taught classes. I have been the Union's spokesperson in negotiations. I am the Local's Political Action Coordinator and have testified and lobbied at the Legislature. As Secretary-Treasurer since 1985, I am responsible for our finances and records.

I believe that the Union's strength is brought forth through our collective leadership, drawing together and using the power of our solidarity. Our Convention has adopted a progressive program. Leadership must unite us in implementing our principles and policies.

In all the races, I urge you to support those candidates with the drive and experience to bring us together and move us forward.

## Statewide Industrial Grouping Local Executive Board Candidates



**Sugar Grouping Candidate  
Kelly Ruidas**



**Longshore Grouping Candidate  
Nelson K. Rita**



**Pineapple Grouping Candidate  
Mathew Rodrigues**



**General Trades Grouping Candidate  
Juanita Pedra**



**Tourism Grouping Candidate  
Lee Ann Perez**

# Kauai Division Candidates



**Division Director Candidate  
Michael Machado**

Being a Union member since 1976, I have seen many changing times in the Union and the Islands as a whole. There has been the good times and the bad times. Your support during the past years in my full time position in the Union as been greatly appreciated and I hope I can count on it as we move forward in these hard times. These are tough times, but together we can come through them and keep moving forward towards a more prosperous future for all working people.



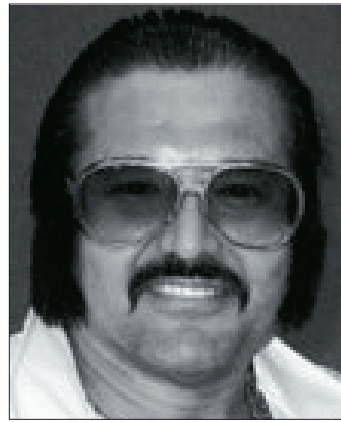
**Business Agent Candidate  
Pamela Green**

I picked up a card from a phone company and written on the card was "Less Talk More Action". I placed that card on the visor of my car because I wanted a daily reminder that those were good words to try to practice. I have to admit that some days I do better than others, but that is the beauty of a new day, you get to try again.

So, with that thought, I don't have a list of promises, or the solution to the awful financial mess that the last few years have given us. I do believe that to survive and make our Union stronger it is going to take *all of us* trying to do more, and I will continue to challenge myself every day to try to live by those words.

I appreciate the responsibility you have given me to serve as your Business Agent and I would like to ask for your vote once again.

In Solidarity,  
Pamela Green



**Business Agent Candidate  
Alan "King" Kimura**

Aloha Everyone,  
I want to thank all of you for the opportunity to possibly represent you as a Business Agent for the island of Kaua'i.

My name is Alan King Kimura, and the reason for my nickname is, I am an Elvis fan, and have been for many, many years.

I come from the North Shore, an employee of the Princeville Operating Company, where I have been working for the past 34 years in the Project Maintenance department. I've worked as a bell hop, housekeeping, golf course, and maintenance. While in the maintenance department I started off at the very bottom and worked my way up to First Class Leadman position.

I have been unit chairman in our unit for over 20 years. While as chairman I've experienced all different types of situations, and challenges, growing along the way both personally and professionally.

I now feel I am ready to take the next step, along with new challenges, and new heights of my future endeavors.

I would like to humbly present myself to you as a candidate for one of the two business agent's positions, here on Kaua'i.

A Sincere Mahalo to all of You,  
Alan King Kimura

**Division Trustee Candidate  
Doreen H. Kua**  
*No Photo or Statement Submitted*

**Executive Board Candidate  
Jon D. Garcia, Sr.**  
*No Photo or Statement Submitted*

**2012 International Convention Delegate Candidates**

**Sugar  
No Candidate**

**Longshore  
No Candidate**

**General Trades  
Jon D. Garcia Sr.**

**Tourism  
Robert (Bobby) J. Costa**  
*No Photo or Statement Submitted*

**Jonalen D. Kelekoma**  
*No Photo or Statement Submitted*



The VOICE of the ILWU (ISSN 0505-8791) is published monthly except April and a combined June/July issue for \$2 per year by Hawaii International Longshoremen's & Warehousemen's Union, 451 Atkinson Drive, Honolulu, Hawaii 96814. Periodicals postage paid at the post office of Honolulu, Hawaii.

POSTMASTER: Send address changes to VOICE of the ILWU, c/o ILWU Local 142, 451 Atkinson Drive, Honolulu, HI 96814. Editorial Board: Fred Galdones, Donna Domingo and Guy K. Fujimura.

Editor: Mel Chang

**LOCAL TITLED OFFICERS**

**PRESIDENT**

To be elected by a plurality of all votes cast by the entire membership of the Local. Vote for no more than one (1).

**Fiesta Jr., Isaac  
Medeiros, Jason**

**VICE-PRESIDENT**

To be elected by a plurality of all votes cast by the entire membership of the Local. Vote for no more than one (1).

**Domingo, Donna**

**SECRETARY-TREASURER**

To be elected by a plurality of all votes cast by the entire membership of the Local. Vote for no more than one (1).

**Fujimura, Guy K.**

**LOCAL EXECUTIVE BOARD**

**INDUSTRIAL GROUPING REPRESENTATIVE**

To be elected by a plurality of all votes cast in the **Sugar** Industrial Grouping in all Divisions. Vote for no more than one (1).

**Rudias, Kelly**

To be elected by a plurality of all votes cast in the **Longshore** Industrial Grouping in all Divisions. Vote for no more than one (1).

**Rita, Nelson K.**

To be elected by a plurality of all votes cast in the **Pineapple** Industrial Grouping in all Divisions. Vote for no more than one (1).

**Rodrigues, Mathew**

To be elected by a plurality of all votes cast in the **General Trades** Industrial Grouping in all Divisions. Vote for no more than one (1).

**Pedra, Juanita**

To be elected by a plurality of all votes cast in the **Tourism** Industrial Grouping in all Divisions. Vote for no more than one (1).

**Perez, Lee Ann**

**KAUAI DIVISION ELECTION AND CANDIDATES**

**DIVISION DIRECTOR**

To be elected by a plurality of all votes cast in Kauai Division. Vote for no more than one (1).

**Machado, Michael**

**DIVISION TRUSTEE**

To be elected by a plurality of all votes cast in Kauai Division. Vote for no more than one (1).

**Kua, Doreen H.**

**LOCAL EXECUTIVE BOARD**

To be elected by a plurality of all votes cast in Kauai Division. Vote for no more than one (1).

**Garcia, Sr., Jon D.**

**BUSINESS AGENT-AT-LARGE**

To be elected by a plurality of all votes cast in Kauai Division. Vote for no more than two (2).

**Green, Pamela  
Kimura, Alan "King"**

**2012 International Convention Delegate  
Sugar Grouping**

To be elected by a plurality of votes by all Sugar members in Kauai Division. Vote for no more than one (1)

**No Candidate**

**Longshore Grouping**

To be elected by a plurality of votes by all Longshore members in Kauai Division. Vote for no more than one (1)

**No Candidate**

**General Trades Grouping**

To be elected by a plurality of votes by all General Trades members in Kauai Division. Vote for no more than one (1)

**Garcia, Sr., Jon D.**

**Tourism Grouping**

To be elected by a plurality of votes by all Tourism members in Kauai Division. Vote for no more than one (1)

**Costa, Robert (Bobby) J.  
Kelekoma, Jonalen D.**

## Hawaii Division Candidates



**Division Director Candidate  
Richard B. Baker Jr.**

Brothers and Sisters of the ILWU Local 142 Hawaii Division:

It is with my deepest respect and honor for the rank and file that I am humbly seek your assistance in serving for a third term as your Division Director. As many of you know I progressed through the rank and file in various leadership roles since 1988. Currently, as Division Director, I devoted my energies in unifying the Hawaii Division leadership team in working toward one goal—improvement in meeting YOUR needs.

Since 2004 as Division Director, it has been a privilege building the Division team working on training and mentoring unit leaders to take us into the next generation as we face the challenges of the 21<sup>st</sup> century. We need to prepare for these hard times; when our members are hurting and experiencing cuts in hours of work, layoffs, and job losses. As leaders, now more than ever need to continue our work organizing efforts of new membership to grow in numbers. Increasing our membership provides us with a better bargaining position. I pledge to continue my commitment to be there for you though a unified leadership team approach. Thanks for your continued support.



**Candidate Business Agent  
Greg Gauthier**

Aloha Sisters and Brothers! I have proudly served you since September of 2001 as a Business Agent. I am elected from the Mauna Kea Beach Hotel. I want to say a sincere mahalo to all of our unit officers who have volunteered their time to assist their fellow workers through one of the most difficult economic times we have seen in decades. We must continue to encourage all of our members to hold fast to our collective values and remain strong during these times in order to protect our wages and benefits from becoming another statistic of a battered economy. We must all resolve to participate in the democratic process in this Union. We must vote, we must represent our departments and ourselves in grievances, and we must ask questions of ourselves and our leaders. I am proud to be a part of a cohesive team in Hawaii Division that focuses on working together in order to maintain and gain crucial ground for working people. I would respectfully encourage you to get involved, because justice cannot happen without you. Our Union provides us with the tools to achieve justice, but they can only work if we use them. God Bless!



**Business Agent Candidate  
Elmer Gorospe**

Aloha Brothers and Sisters of Local 142,

My name is Elmer C. Gorospe. I would like to take this opportunity to say “thank you” to all my Brothers and Sister of Hawaii Division in supporting me for the past 6 years for which I served as a Business Agent. During this past 6 years I have gained the experience and knowledge to service members from different industries such as General Trades, Tourism and most recently Longshore. In addition I have gain a lot of experience in Unemployment Insurance handling, grievance handling, workers compensation, arbitration hearings and contract negotiating, which I serve as a co-spokesperson and spokesperson in several contract negotiations. As fulltime officers, I am committed to serve the rank & file; continue to fight to protect workers rights, job security, pension benefits and medical benefits. It is my goal to educate the rank & file the benefits of having a union, to continue to stress the importance of solidarity and to make a positive difference in the lives of our membership. Again, brothers and sisters, I humbly ask for your support for me and the Hawaii Division team in this upcoming Local election.

Mahalo, Elmer C. Gorospe



**Business Agent Candidate  
Wallace A. Ishibashi Jr.**

Aloha! Sisters and Brothers, Wallace A Ishibashi Jr here humbly asking for your support and vote of confidence. As I seek re-election to the Full Time Office of Business Agent of ILWU Local 142 Hawaii Division.

It truly is an honor to serve you all these years, it was filled with good times and challenging times. As we all learned together how important this organization is to the well being of our family and community. Will we continue to implement what we have learned as we face further difficult times ahead or will we surrender to these trying times and give up?

Together we must learn to adjust and adept to the changing time that we are faced with and living in now. We must take the challenge head on with passion and a great desire to over come any obstacle in our way. Together we will succeed to reach and gain back dignity in the work place and a quality of life that we all deserve. I am looking forward to working with your ideas and our examples to address the needs and wants of the rank and file.

“When in doubt check me out”  
Mahalo Nui Loa  
Aeae

### HAWAII DIVISION ELECTION AND CANDIDATES

#### DIVISION DIRECTOR

To be elected by a plurality of all votes cast in Hawaii Division. Vote for no more than one (1).

**Baker, Jr., Richard B.**

#### DIVISION TRUSTEE

To be elected by a plurality of all votes cast in Hawaii Division. Vote for no more than one (1).

**Rillanos, Mary "Swanee"**

#### LOCAL EXECUTIVE BOARD

To be elected by a plurality of all votes cast in Hawaii Division. Vote for no more than one (1).

**Spencer, Myra I.C.**

#### BUSINESS AGENT-AT-LARGE

To be elected by a plurality of all votes cast in Hawaii Division. Vote for no more than five (5).

**Gauthier, Greg  
Gorospe, Elmer  
Ishibashi, Jr., Wallace A.  
Martin, George A.  
Salmo, Corinna M.**

#### 2012 International Convention Delegate

##### Longshore Grouping

To be elected by a plurality of votes by all Longshore members in Hawaii Division. Vote for no more than one (1)

**No Candidates**

##### General Trades Grouping

To be elected by a plurality of votes by all General Trades members in Hawaii Division. Vote for no more than one (1)

**Butterfield, Christeen "Teena"**

##### Tourism Grouping

To be elected by a plurality of votes by all Tourism members in Hawaii Division. Vote for no more than one (1)

**Masuhara, Francine L.**

##### At-Large

To be elected by a plurality of votes by all members of Hawaii Division. Vote for no more than two (2)

**DeCambra, Robyn A.  
Saniatan Sr., Dennis**

# Hawaii Division Candidates



**Business Agent Candidate**  
**George A. Martin**  
*No Statement Submitted*



**Business Agent Candidate**  
**Corinna M. Salmo**

The past three years have made a significant difference in my life and I've had experiences I know I would not have encountered had it not been for my role in the ILWU, in particular, as a business agent for Local 142. The economic situation and its uncertainties heavily influence our decision making with difficulties and hardships we face. However, we can still count on the knowledge that we belong to a democratic organization that will continue to be with us during our time of need. As a business agent, I provide assistance to our membership, but it is you, the membership, that I have learned most from. You are the very core of our organization. And so I'd like to thank you and my colleagues for giving me the opportunity to serve you and for your confidence in me. I look forward to the next three years and will strive to continue to work for you and to serve you.

Mahalo nui loa.

---

**Division Trustee Candidate**  
**Mary "Swanee" Rillanos**  
*No Photo or Statement Submitted*

**Local Executive Board**  
**Myra I.C. Spencer**  
*No Photo or Statement Submitted*

---

**2012 International Convention Delegate Candidates**

**Longshore**  
**No Candidate**

**General Trades**  
**Christeen "Teena" Butterfield**  
*No Photo or Statement Submitted*

**Tourism**  
**Francine L. Masuhara**  
*No Photo or Statement Submitted*

**At-Large**  
**Robyn A. DeCambra**  
*No Photo or Statement Submitted*

**At-Large**  
**Dennis Saniatan Sr.**  
*No Photo or Statement Submitted*

---

## MAUI DIVISION ELECTION AND CANDIDATES

**DIVISION DIRECTOR**

To be elected by a plurality of all votes cast in Maui Division. Vote for no more than one (1).

**Casumpang, Jr., Nicanor E. "Nick"**  
**Kennison, William "Willie"**

**DIVISION TRUSTEE**

To be elected by a plurality of all votes cast in Maui Division. Vote for no more than one (1).

**Cabading, Douglas**

**LOCAL EXECUTIVE BOARD**

To be elected by a plurality of all votes cast in Maui Division. Vote for no more than one (1).

**Bunyard, Michael L. "Mike"**  
**Friday, Michael**

**BUSINESS AGENT-AT-LARGE**

To be elected by a plurality of all votes cast in Maui Division. Vote for no more than five (5).

**Andrion, Jr., Robert "Bobby"**  
**Baltero Sr., Jeffrey Bello**  
**Castro Sr., Stephen "Steve"**  
**DeMello, Jerrybeth "JB"**  
**Espeleta, Teddy B. (Bear)**  
**Kahooohanohano, Jr., Abel L.**  
**Romero, Jr., Claro P. "Pascua"**  
**Truong, David "Pac Man"**  
**West, Stephen W.**

**2012 International Convention Delegate**

**Sugar Grouping**

To be elected by a plurality of votes by all Sugar members in Maui Division. Vote for no more than one (1)  
**No Candidates**

**Longshore Grouping**

To be elected by a plurality of votes by all Longshore members in Maui Division. Vote for no more than one (1)  
**No Candidates**

**Pineapple Grouping**

To be elected by a plurality of votes by all Pineapple members in Maui Division. Vote for no more than one (1)  
**No Candidates**

**General Trades Grouping**

To be elected by a plurality of votes by all General Trades members in Maui Division. Vote for no more than one (1)  
**No Candidates**

**Tourism Grouping**

To be elected by a plurality of votes by all Tourism members in Maui Division. Vote for no more than one (1)  
**No Candidates**

**At-Large**

To be elected by a plurality of votes by all members of Maui Division. Vote for no more than two (2)  
**No Candidates**

# Maui Division Candidates

**Division Director Candidate**  
**Nicanor "Nick" E. Casumpang, Jr.**  
*No Photo or Statement Submitted*



**Division Director Candidate**  
**William "Willie" Kennison**

In the past, I served as a Division Representative, Business Agent and am presently the Maui Division Director. However, the past three years have been the most trying times of my 30 years as a full-time officer of the ILWU Local 142. Due to recent economic conditions, the union gave relief to some of the companies that we represent. However, we made sure that any assistance we gave to these companies will be restored to our members over the life of the agreement.

It was with the help of the Unit Leadership and Business Agents that we have been able to negotiate improvements in a majority of the Collective Bargaining Agreements with companies in Maui and Lanai. We were also able to have some non-resort companies join the General Health and Welfare Trust Fund and enroll more hotels into the Health and Welfare Trust Fund. In addition to this, we continue to assist members with their workers compensation, Social Security and pension benefits.

Our goal is to ensure that in the long run, we save our members jobs so we all have a bright future to look forward too.

**2012 International Convention Delegate Candidates**

- Sugar**  
No Candidates
- Longshore**  
No Candidates
- Pineapple**  
No Candidates
- General Trades**  
No Candidates
- Tourism**  
No Candidates
- At-Large**  
No Candidates

## Maui Division Candidate List on page 5



**Business Agent Candidate**  
**Roberto "Bobby" Andrion Jr.**

Brothers and Sisters,  
 I humbly come before you in these times of economic uncertainty to express my appreciation in your undying support as one of your elected Business Agents for the Maui Division for the last six years. I surely hope that I have measured up to your expectations. Each day is always challenging, but yet very rewarding to be able to offer a helping hand to those brothers and sisters in need.

There can be no greater urgency then too maneuver our union to better meet the daily challenges that is before us. As your Business Agent from the Maui Division, I would like to be part of that leadership to help preserve what we enjoy today, for a better life tomorrow.

I am not only asking for your vote of confidence, but your help to make a great Union like the ILWU a much greater Union. Together nothing is impossible, and the possibilities of what we can do is endless.

It would be an honor if I could be so bold in asking for your-continued support this coming election so that I can continue to serve you.

Yours truly,  
 Roberto Bobby Andrion Jr.



**Business Agent Candidate**  
**Jeofrey Bello Baltero Sr.**

New Young, Aggressive and Dynamic Business Agent.  
 New Strategy and progress.  
 New Voice to Help Union Members.

New plans and Ideas, to Voice Your Rights 24/7

I'm very humble for the Union Members Trust and for their Nomination to run as their candidate for The People's Union Business Agent in this year election. When i'm elected, our Union members will have the benefit of 100% 24/7, the Most Responsive and Active Agent for our Union Members. I'm ready and able to serve our Union members effectively. My goal is also to educate every member about their rights on the job and to encourage them to participate in the Union by volunteering to serve as stewards to help each other. I believe Union Members have a need to voice their rights, anytime. Yes ! Vote Jeofrey Bello Baltero Sr. For Your Business Agent.

Masapol a Buklen tayo ti Pwersa ken Bileg ti Union. Timek ti Kaadwan ken Paganpanpannakkel Dagiti Pilipino. Aramid ti Pakakitaan. Pagyamanak ti Suporta yo amin. Dios ti kumuyog kanya yo, Mabuhay To All ! Salamat Po !



**Business Agent Candidate**  
**Stephen "Steve" Castro Sr.**

**"WORKING FOR YOU AND WORKING TOGETHER"**

ALOHA, I'm Stephen "Steve" Castro Sr. I have been an ILWU member since 1979. I worked for the Kapalua Bay Hotel for 28 years and have served in the capacity as a steward, unit editor, grievance chairman, vice chairman and chairman. I have participated in hotel negotiations, served as a member of the local executive board, and attended several hotel and labor institutes focusing on grievance and advance grievance handling, unit mobilization, internal organization, labor law awareness, steward and unit officer leadership, contract negotiations, unemployment and workers compensation.

My focus is unit solidarity by improving unit leadership structure from stewards to officers. My ultimate goal is to keep our members informed of their rights through unit news bulletins and membership meetings. It is also my desire to continue to serve our membership to the best of my abilities while enforcing the collective bargaining agreements.

During these economic times, we are faced with many challenges but with the support of the unit leadership and members working and moving forward together, all things are possible.

I humbly ask for your support and look forward to continue serving you.



**Business Agent Candidate**  
**Jerrybeth "JB" DeMello**

I have worked and served as a member of the ILWU, as a Business Agent for 39 years from unit, 2505-The Westin Maui Resort and Maui Division. I have served the union in various capacities, including Unit Chair, Contract Negotiation Committee, Local Executive Committee, Local Trustee-At-Large, Captain of International and Local Conventions. I represent our Tourism Industries from Lahaina to the island of Lana'i. I appreciate all the support you have given me in the past and ask for your continued support this year for re-election as one of the five (5) Business Agents to be elected for the up coming "2010-2012" three year term. I will continue to work for the future of our union, for our members to help maintain our strength at all levels and strive to preserve our union's traditional stronghold. Allow me, to continue to be Maui Division-Business Agent in this up coming election in November 14-20, 2009.

Thank you for your support.  
 Jerrybeth "JB De Mello  
 Maui Division - Business Agent

# Maui Division Candidates

**Executive Board Candidate  
Michael Friday**

*No Photo Submitted*

My name is Michael Friday and I have been a union member for the last nine years. I hold the Grievance Chair at the Grand Wailea Resort, and I'm also a Shop Steward.

I believe our Union can grow stronger in these troubled times, for it is in troubled times that it becomes clear to people how necessary unions are. I believe we need to find our members who believe in Social Justice and give them the education and experience they need to become the next generation of union leaders.

It is also important that we clearly and repeatedly inform our politicians on all levels just what working families expect from them.

In return for your vote, I promise my full attention and effort to every duty I will have as a member of the Local Executive Board.



**Executive Board Candidate  
Michael L. "Mike" Bunyard**

My name is Mike Bunyard and I am a 15 year member at The Westin Maui that looks forward to becoming your Maui Division Local Executive Board Representative. With the Local Convention behind us and moving forward to the next triennium, the Local Executive Board will be the highest decision making body for the ILWU Local 142. With my experience in Negotiation, Unit Vice-Chair, Grievance Chair, attending two Labor Institutes, two International Conventions, and two Local Conventions, I have the knowledge and ability to serve our members and the ILWU in these challenging times. I want to help make the decisions that get our members and the union through the next three years and beyond.

**Division Trustee Candidate  
Douglas K. Cabading**  
*No Photo or Statement Submitted.*

**Business Agent Candidate  
Claro P. "Pascua" Romero, Jr.**  
*No Photo or Statement Submitted*



**Business Agent Candidate  
Teddy B. (Bear) Espeleta**

My Name is Teddy B. (BEAR) Espeleta.

I am currently a Business Agent with the Maui Division and seeking re-election for BUSINESS AGENT-AT-LARGE for the Maui Division. I have been a Business Agent since 2003, before becoming a Business Agent I served as Unit Chairman for Unit 2307 Maui Pineapple Company and have been a union member for more then 30 years and served as an officer with the ILWU Local 142 in different capacities. As a Business Agent with the ILWU Local 142, I have represented the different Industries and contracts in the ILWU, like Pineapple, Sugar, General Trades, Tourism and Longshore. If I am re-elected, I will continue to represent and help the members of the ILWU Local 142 to the best of my ability. I humbly ask for your support in this upcoming election.

Sincerely  
TEDDY B. (BEAR) ESPELETA  
ILWU BUSINESS AGENT  
MAUI DIVISION



**Business Agent Candidate  
Abel Kahoohanohano, Jr.**

My name is Abel L. Kahoohanohano Jr. I am running for Business Agent at Large for the Maui Division, my credentials are as follows:

- ILWU Member for 35 years.
- Unit 2101 Steward for H.C.&S – 1975– 1987
- Unit 2406 Steward for Ameron, Maui– 1987-2000
- Unit 2406 Chairman – 2000-2006
- Temporary Business Agent 2003 – 2005
- ILWU Maui Political Action Chairman/Coordinator – 2004 – 2006
- Full time Business Agent – Maui Division – 2007 – 2009
- Current Properties that I represent: Unit 2515 - Hyatt Regency Maui, Unit 2406 – Construction Companies (Ameron, Hawaiian Cement, Walker Industries, Maui Blocks), Unit 2404 – Tri Isle Trucking and Unit 2409 - Paradise Beverages



**Business Agent Candidate  
David "Pac Man" Truong**

I want to thank the members of ILWU Local 142 for their nomination in this years election. I've been a Shop Steward representing the members of unit 2401 CastleCooke Transportation since 2006. I have also been involved in helping our members in the Laundry and Retail dept in solving their Rights On the Job issues.

In these hard times when mgmt are forcing our members to more with less workers, there are going to be alot of problems with contract violations dealing with seniority rights, and our members really need HELP to come to them QUICKLY. Earlier this year, because of our QuickResponse Request for help from 2 members who were facing termination, we managed to save their jobs.

In these hard times, QuickResponse to our members problems makes all the difference. My Goal is also to Teach as many members as possible to understand their Union Contract, to know that it holds a lot of Power and to use that Power to help other Members. When the People elect me, i will devote this Service to All our members as their Business Agent. Thank you, to our Union Brothers and Sisters for your support.



**Business Agent Candidate  
Stephen W. West**

Aloha, my name is Stephen West. I am currently an appointed business agent for the Maui Division. I humbly ask for your support in the next election, so I may continue to serve the membership.

I have been a member for 23 years working at the Maui Prince Hotel, Unit 2511 where I served as the unit chair from 2001-2007. I also worked at the Grand Wailea and Spa unit 2520 for 15 years. For both of those units I was involved in various negotiations, involving the two units where I was part of a team to make positive change for the workers. That is where I truly began to get involved with my union, during that time I held various unit positions.

I served as a Political Action Committee Coordinator for the Maui Division. Was elected as a delegate to the ILWU International and Local Conventions, and attended labor institutes, received training in grievance handling and workmen's comp.

And now as a business agent I've have used the training to help our members and families to better there life's in the work place, home, and in there community.

I ask for your support, so I may continue to serve.

## Oahu Division Candidates



**Division Director Candidate  
Dave K. Mori**

Division Director Dave Mori is one of the most experienced and knowledgeable leaders in our Union today with over 30 years of dedicated experience. Although Dave is running unopposed in his third-term as Division Director, he gratefully thanks every member for his/her support over the past six years.

Dave started his humble beginnings in the ILWU in 1976 as a field worker at Oahu Sugar and quickly moved up to become a journey machinist. He was first elected Unit Secretary/Treasurer in 1978, and served as Unit Chair and Division Trustee before being elected as a Business Agent in 1991. He has served as Division Director since 2004.

Under Dave's leadership over forty different Units have successfully negotiated the best possible contracts, many of them newly organized Units. As Division Director he continues to negotiate good contracts and helps to organize the unorganized by mentoring and educating others.

"I will take the trust that you bestowed on me to ensure that your rights and benefits are aggressively defended, and closely monitor the practices of our Union to ensure that your hard earned dues are responsibly administered in these difficult economic times without compromising programs and services that you have depended on."



**Executive Board Candidate  
Dillon M. Hullinger**

My name is Dillon Hullinger and I have been an ILWU member for the past 20 years working for Foodland Supermarket. I have taken an active role in the union for the past 15 years as a steward, a Vice Chair and for the past 8 years serving as the Foodland Unit Chair. I participated as a committee member in the last 4 Foodland negotiations from 1997 and in the 2003 and 2007 I served as the Unit Negotiations Committee Chair. I also had the opportunity to attend the International Conventions in 2000, 2003, 2006, & 2009 and the Local Conventions in 2000, 2003, & 2009. I have been active at the Division level participating in the DEB Meetings, PAC activities and organizing activities. I have learned a lot by participating and being involved in these union activities.

I would like to participate at the Local level. I hope my years of experience can help the local in its direction for the next 3 years by representing the Oahu Division on the Local Executive Board.



**Business Agent Candidate  
Shane A. Ambrose**

Aloha, my name is Shane Ambrose and I am running for another term as Business Agent representing the workers in Oahu Division. It has been a very challenging term due to the economy. Wage reductions and loss of benefits by the members have made it difficult but I believe that with struggle there is unity and hope. I am optimistic that with hard work we can pull through these tough times together.

I became a member in 1990 when I started working at Foodland Supermarket. I eventually became a Grocery Clerk and served as a Shop Steward and later served as a Unit Officer. I also served on the Local Executive Board from 2000 to 2003. This gave me an opportunity to really see how the Union works for us. Prior to being elected I served as a temporary Business Agent which provided me an opportunity to learn the basics of the job.

I really appreciate the time and effort put in by the members, leadership, retirees and staff of this great Union which continue to inspire me. I humbly ask for another opportunity to serve the membership and to expand my knowledge and experience to better service you.



**Business Agent Candidate  
Brandon Bajo-Daniel**

Aloha, my name is Brandon Bajo-Daniel and I have served as a business agent for almost 4 years. I represent Air Liquide, Del Monte, Dole, HARC, Links at Kulima, Mililani Town Association and the Simmons Mattress Company. I am also a co-coordinator for the Union Sports.

In 1979 I joined the rank and file and became actively involved in 1984 as the union steward for Del Monte, and then as their Unit Chair up until my appointment as Business Agent. My other experiences have been as a nominated delegate for the Local and International Conventions, a member of the state PAC committee, Sec. and Chairman for the Pineapple Statewide Negotiating Committee and organizer for Dole Tropical.

My focus these past 4 years has been about "integrity of the workplace"; by representing the integrity of the rank and file and the value of their work, and by being the reminder to management about their practices. It is an honor to maintain your integrity by holding management accountable for their actions.

Although I have not yet served your unit I ask that you support me with your vote so that I may continue to be the voice for your brothers and sisters.



**Business Agent Candidate  
Karl Lindo**

Aloha to ILWU members. I became a member in 1989 as a hotel worker from Hawaiian Waikiki Beach Hotel and served as the Unit Chair and a Local Organizer before I was appointed a Business Agent in 1995. For the past 15 years I have had the opportunity to service our members and negotiate contracts for many companies in our Union.

I have learned a lot from my experience as a Business Agent and from working with the Rank and File Leadership and members. For me a very important part of serving the Union is to give back the knowledge that we have gained to the Union and the membership. By sharing and teaching what we have learned, we can continue to build the Union for the future.

I want to thank the Unit Leaders for their hard work in representing their members and the membership for their support these past 3 years. In these tough times, all of you are the difference in what we can accomplish as a Business Agent. Mahalo for your support.



**Business Agent Candidate  
Lorenzo "Larry" Ruiz**

My name is Lorenzo "Larry" Ruiz I am once again running for the office of Business Agent representing the members on Oahu. I want to continue humbly serving you as a representative of this great organization.

My family roots in the ILWU go back with my father who was a longshoreman. I also had others family members who worked in the sugar and pineapple groupings. Currently, my wife and son are also members of the ILWU with Foodland Super Market.

I learned the Union values of hard work and dedication early in life and continued the service to the Union as a member of Foodland Super Market starting in 1971. I started serving as a Unit officer in 1991 and I participated in every single negotiation since then. In 2001 I was appointed to serve as Business Agent where I have tried to pass on the values I've learned to those I serviced.

I am really thankful to have another opportunity to serve you to the best of my abilities and pass on the values that have served this great Union since the beginning. Thank you.



# Oahu Division Candidates

**Division Trustee Candidate  
Nathan "Nate" Lum**

*No Photo or Statement Submitted*

**2012 International Convention  
Delegate Candidates**

**Sugar  
No Candidates**

**Longshore  
Dustin Dawson**  
*No Photo or Statement Submitted*

**Pineapple  
No Candidates**

**General Trades  
No Candidates**

**Tourism  
Donna Lee "Kehau" Oyamoto-  
Maeha**  
*No Photo or Statement Submitted*

**At-Large  
No Candidates**

**OAHU DIVISION ELECTION AND CANDIDATES**

**DIVISION DIRECTOR**

To be elected by a plurality of all votes cast in Oahu Division. Vote for no more than one (1).

**Mori, Dave K.**

**DIVISION TRUSTEE**

To be elected by a plurality of all votes cast in Oahu Division. Vote for no more than one (1).

**Lum, Nathan "Nate"**

**LOCAL EXECUTIVE BOARD**

To be elected by a plurality of all votes cast in Oahu Division. Vote for no more than one (1).

**Hullinger, Dillon**

**BUSINESS AGENT-AT-LARGE**

To be elected by a plurality of all votes cast in Oahu Division. Vote for no more than five (5).

**Ambrose, Shane A.  
Bajo-Daniel, Brandon  
Lindo, Karl  
Ruiz, Lorenzo "Larry"  
Tanaka, Brian S.  
Yamaguchi, Michael Sean  
Young, Gordon**

**2012 International Convention Delegate**

**Longshore Grouping**

To be elected by a plurality of votes by all Longshore members in Oahu Division. Vote for no more than one (1).

**Dawson, Dustin**

**Pineapple Grouping**

To be elected by a plurality of votes by all Pineapple members in Oahu Division. Vote for no more than one (1).

**No Candidates**

**General Trades Grouping**

To be elected by a plurality of votes by all General Trades members in Oahu Division. Vote for no more than one (1).

**No Candidates**

**Tourism Grouping**

To be elected by a plurality of votes by all Tourism members in Oahu Division. Vote for no more than one (1).

**Oyamot-Maeha, Donna Lee "Kehau"**

**At-Large**

To be elected by a plurality of votes by all members of Oahu Division. Vote for no more than one (1).

**No Candidates**



**Business Agent Candidate  
Brian S. Tanaka**

The rank and file members should run our Union. This means our elected union leaders should take their direction from the membership and not act like bosses. As your business agent I will listen to your concerns, will do my best to represent you, and work hard to keep our Union united. We should all be working together for the betterment of our union and membership. If you don't get more involved by participating in your Union programs, then you risk the chance to lose the labor benefits we all enjoy today.

I believe that my nearly 32 years experience in the ILWU Local 142, at Steward, Unit Officer, Trustee, Division Executive Board, International Executive Board, Business Agent and Sports Coordinator levels makes me uniquely qualified to take an active part in our Union. I know how ILWU operate and can use my experience to ensure that your needs will be met.

I want to take this opportunity to thank you, the rank and file, for your support the past fifteen years. It has been a great honor to serve as a Full-Time Officer. Again, I ask for your continued support in this up-coming election. Mahalo.



**Business Agent Candidate  
Michael Sean Yamaguchi**

My name is Michael Yamaguchi and I am running for the position of Oahu Division Business Agent. During these very challenging economic times, it is crucial that you elect Business Agents who are experienced and capable of representing you.

On January 1, 2010 the Oahu division will go from seven Business Agents down to five. I ask you, the rank and file, who are the blood of this Union to vote for the individuals who you think is most qualified to serve you.

I have been a member of ILWU Unit 4406 The Honolulu Advertiser since 1996. My experience as a Shop Steward, Unit Secretary, Unit Editor, Business Agent and Local Representative will assure you the representation that you need and deserve.

I was elected by you, the rank and file, to serve as Business Agent in 2003; I was then elected to serve on the Local Executive Board in 2006.

In 2007 I was appointed to be a Local Representative and assigned to assist the Oahu Division. I humbly ask for your support in electing me to serve you as a Business Agent on Oahu. I promise to work hard and represent you to the best of my ability.



**Business Agent Candidate  
Gordon Young**

I would like to thank all the members who supported me in the past and continue to support me. Because of members like you, who are devoted to working class principle and justice, the ILWU is well respected throughout the world.

The ILWU has been good to my family. My mother worked as a trimmer/packer at the Dole Cannery for over 20 years. The wages and benefits won by the Union enabled her to comfortably raise our family and give us a good education. I myself obtained a Master's Degree.

I served as Business Agent in 1991-94, because I wanted to give back to others what the ILWU has provided to my family and me. But due to personal reasons I had to leave office. However, I continued to serve as an elected Unit Officer at the Honolulu Advertiser.

With the retirement of our Local President, our Union will face new challenges. Employers are constantly trying to erode hard fought benefits won in previous contracts. I humbly ask for your support again in electing me to serve you as a Business Agent.

My commitment to you is, I will continue to work diligently to protect your rights.

# HAWAII DIVISION—Polling Dates, Times and Locations

## 1201 - Big Island Stevedores

11/19 2:00 pm to 4:00 pm..... ILWU Hall - Hilo

## 1201 - Young Brothers Ltd. - Hilo

11/16 12:00 pm to 2:00 pm..... YB Hilo Lunch Room

## 1201 - Young Brothers Ltd. - Kawaihae

11/20 3:30 pm to 4:00 pm Emp. Lunch Rm, Kawaihae Harbor  
.....

## 1401 - MLMO, LP - Ka'u

11/18 6:00 am to 7:00 am..... Garage - Ka'u  
11/19 11:00 am to 12:00 pm..... Husking Station  
11/19 3:30 pm to 4:30 pm.... ILWU Office hand harvest  
11/20 6:00 am to 7:00 am..... ILWU Pahala Office  
11/20 3:30 pm to 4:00 pm..... ILWU Pahala Office

## 1402 - Mauna Loa Macadamia Nut Corp.

11/16 7:30 am to 10:30 am..... Employee Lunch Room  
11/16 11:00 am to 11:30 am..... Husking Plant  
11/16 12:00 pm to 3:00 pm..... Employee Lunch Room  
11/17 8:00 pm to 11:00 pm..... Employee Lunch Room  
11/18 10:00 am to 3:00 pm..... Factory

## 1403 - MLMO, LP - Keaau

11/16 6:00 am to 7:00 am..... Keaau Field Station  
11/16 3:30 pm to 4:30 pm..... Keaau Field Station  
11/17 6:00 am to 7:00 am..... Keaau Garage  
11/17 3:30 pm to 4:00 pm Mauna Kea Orchards Staging Area

## 1408 - Hu Honua Bioenergy LLC

11/18 1:00 pm to 1:30 pm..... Hu Honua Power Plant

## 1410 - Floral Resources/Hawaii Inc.

11/20 6:00 am to 7:30 am..... Packing Building  
11/20 12:00 pm to 12:30 pm..... Kahakai Building

## 1412 - Hilo Transportation Co. - Hilo/Kona

11/16 6:30 am to 7:30 am..... Warehouse (Hilo)  
11/16 12:00 pm to 1:00 pm..... Warehouse (Hilo)  
11/17 6:30 am to 7:30 am..... Warehouse (Hilo)  
11/17 6:30 am to 7:30 am..... Warehouse (Kona)  
11/17 12:00 pm to 1:00 pm..... Warehouse (Hilo)

## 1412 - Yamada Diversified Corp.

11/16 5:30 am to 7:00 am..... Baseyard  
11/16 11:00 am to 12:00 pm..... Quarry  
11/17 5:30 am to 7:00 am..... Baseyard  
11/17 11:00 am to 12:00 pm..... Quarry

## 1413 - Big Island Toyota

11/16 6:30 am to 7:00 am... Shop (outside lunch table)  
11/16 7:30 am to 8:45 am... Shop (outside lunch table)  
11/17 6:45 am to 7:15 am... Shop (outside lunch table)

## 1413 - Kamaaina Motors

11/16 9:00 am to 10:00 am..... Employee Lunch Room

## 1414 - BEI Hawaii - Hilo

11/16 6:00 am to 6:30 am..... Warehouse - Hilo

## 1414 - BEI Hawaii - Kona

11/19 7:00 am to 8:00 am..... Worksite - Kona

## 1414 - Pepsi Bottling Group - Hilo

11/18 6:15 am to 6:30 am..... Lunch Room - Keaau  
11/18 12:00 pm to 12:30 pm..... Lunch Room - Keaau  
11/18 3:30 pm to 4:00 pm..... Lunch Room - Keaau

## 1414 - Pepsi Bottling Group - Kona

11/17 5:30 am to 6:00 am..... Warehouse - Kona  
11/17 9:45 am to 10:45 am..... Warehouse - Kona

## 1414 - Punalu'u Bake Shop

11/18 8:30 am to 9:30 am .. Punalu'u Bake Shop Break Room

## 1416 - Tropical Hawaiian Products

11/16 8:00 am to 11:00 am..... Employee Lunch Room

## 1417 - Hawthorne Pacific Corp. Hilo/Kona

11/16 6:30 am to 7:00 am..... Lunch Room - Hilo  
11/17 6:30 am to 7:30 am..... Lunch Room - Kona

## 1418 - Kuwaye Trucking Inc.

11/18 12:00 pm to 3:30 pm..... Lunch Room

## 1419 - A & B Fleet Services Hilo/Kawaihae

11/18 12:00 pm to 12:30 pm..... Hilo  
11/18 12:00 pm to 12:30 pm..... Kawaihae

## 1421 - Foodland Waimea

11/18 9:00 am to 11:00 am..... Breakroom  
11/19 2:00 pm to 4:00 pm..... Breakroom

## 1421 - Sack 'N Save Hilo, Puainako/Gas 'N Go

11/17 9:00 am to 12:00 pm..... Hilo Lunch Room  
11/17 2:00 pm to 5:00 pm..... Hilo Lunch Room  
11/19 9:00 am to 12:00 pm..... Puainako Break Room  
11/19 2:00 pm to 5:00 pm..... Puainako Break Room

## 1421 - Sack 'N Save Kona

11/18 9:00 am to 12:00 pm..... Lunch Room  
11/19 12:30 pm to 7:00 pm..... Lunch Room

## 1421 - Foodland Farms

11/18 9:00 am to 9:30 am..... Lunch Room  
11/18 4:00 pm to 4:30 pm..... Lunch Room

## 1424 - Yukio Okutsu State Veterans Home

11/18 5:30 am to 8:30 am..... YOSVH Family Dining  
11/18 1:30 pm to 3:00 pm..... YOSVH Family Dining

## 1426 - Big Island FCU - Hilo

11/20 9:00 am to 10:00 am..... Break Room - Hilo

## 1426 - Big Island FCU - Keaau

11/20 8:00 am to 9:00 am..... Break Room - Keaau

## 1426 - Big Island FCU - Kona

11/17 8:30 am to 9:30 am..... Lunch Room - Kona

## 1426 - Hamakua Coast Community FCU

11/18 11:00 am to 12:00 pm..... Lunchroom

## 1426 - Hamakua Health Center

11/18 10:00 am to 11:00 am... HHC Conference Room  
11/18 10:00 am to 11:00 am..... Kohala Break Room

## 1426 - North Hawaii Community FCU

11/16 8:00 am to 8:30 am..... Lunch Room

## 1426 - Onomea FCU

11/17 8:15 am to 8:30 am..... OFCU BOD Room

## 1503 - Mauna Kea Resort (MKBH)

11/18 7:00 am to 3:00 pm... Pkg. Stall across Property  
11/19 12:00 pm to 6:00 pm. Pkg. Stall across Property  
11/20 8:00 am to 4:00 pm... Pkg. Stall across Property

## 1505 - King Kamehameha's Kona Beach Hotel

11/17 9:00 am to 11:00 am.. Lunchroom Kona Hallway  
11/17 3:30 pm to 5:30 pm.... Lunchroom Kona Hallway  
11/18 7:30 am to 10:30 am.. Lunchroom Kona Hallway  
11/18 3:30 pm to 5:30 pm.... Lunchroom Kona Hallway

## 1513 - Makalei Golf Club

11/17 10:30 am to 11:30 am... Employee Lunch Room

## 1513 - Transcontinental Corp.

11/18 9:30 am to 11:30 am..... Lunch Room

## 1513 - Waikoloa Village Association

11/18 11:30 am to 12:30 pm..... Lunch Room

## 1515 - The Fairmont Orchid, Hawaii

11/16 7:00 am to 4:00 pm..... Fairmont Worksite  
11/17 7:00 am to 4:00 pm..... Fairmont Worksite  
11/18 7:00 am to 4:00 pm..... Fairmont Worksite

## 1516 - Mauna Lani Resort (Operations), Inc.

11/18 9:00 am to 10:00 am..... Gallery Shop  
11/19 12:30 pm to 1:30 pm. Maintenance Lunch Room

## 1516 - Mauna Lani Bay Hotel & Bungalows

11/17 6:00 am to 4:00 pm..... Employee Entrance  
11/18 6:00 am to 4:00 pm..... Employee Entrance  
11/19 6:00 am to 3:30 pm..... Employee Entrance

## 1517 - Hilton Waikoloa Village

11/17 6:00 am to 6:00 pm Hallway Outside Training Room  
11/18 6:00 am to 6:00 pm Hallway Outside Training Room  
11/19 6:00 am to 6:00 pm Hallway Outside Training Room

## 1518 - Hapuna Beach Prince Hotel

11/17 7:00 am to 4:00 pm..... Employee Entrance  
11/18 8:00 am to 5:00 pm..... Employee Entrance  
11/19 11:00 am to 6:00 pm..... Employee Entrance

## 1519 - Outrigger Keauhou Beach Resort

11/17 7:30 am to 8:30 am..... Smoking Table  
11/17 11:45 am to 12:15 pm..... Smoking Table  
11/17 3:45 pm to 4:15 pm..... Smoking Table  
11/18 7:30 am to 8:30 am..... Smoking Table  
11/18 11:45 am to 12:15 pm..... Smoking Table  
11/18 3:45 pm to 4:15 pm..... Smoking Table

## 1520 - Sheraton Keauhou Bay Resort & Spa

11/15 7:30 am to 3:30 pm..... Cafeteria  
11/16 10:00 am to 5:00 pm..... Cafeteria  
11/17 9:00 am to 4:00 pm..... Cafeteria

## 4402 - Love's Bakery - Hilo

11/17 10:30 am to 1:00 pm..... Thrift Store

## 4402 - Love's Bakery - Kona

11/19 12:00 pm to 3:00 pm..... Worksite

## 4420 - Kaiser Clinic - Kona

11/19 12:15 pm to 12:45 pm..... Kona Clinic

## 4420 - Liberty Dialysis - Hilo

11/17 9:00 am to 4:00 pm..... ILWU Hall - Hilo

# MAUI DIVISION—Polling Dates, Times and Locations

## 2101 - HC&S/HARC

11/16 6:00 am to 11:30 am ..... Puunene Labor Station  
 11/16 12:30 pm to 4:00 pm ..... Puunene Labor Station  
 11/17 6:00 am to 8:00 am ..... Paia Labor  
 11/17 8:30 am to 11:30 am ..... Puunene Elec. Shop  
 11/17 12:30 pm to 4:00 pm ..... Puunene Elec. Shop  
 11/18 6:00 am to 8:00 am ..... Keahua Dir. Office  
 11/18 8:30 am to 11:30 am ..... Puunene Elec. Shop  
 11/18 12:30 pm to 4:00 pm ..... Puunene Labor Station  
 11/19 6:00 am to 7:30 am ..... Chemical Plant Puunene  
 11/19 8:00 am to 11:30 am ..... Puunene Elec. Shop  
 11/19 12:30 pm to 4:00 pm ..... Puunene Elec. Shop  
 11/20 6:00 am to 7:30 am ..... Maalaea Div. Office - Puunene  
 11/20 8:00 am to 11:30 am .... Mill Conference Rm - Puunene  
 11/20 12:30 pm to 4:00 pm .... Mill Conference Rm - Puunene

## 2107 - HC&S Tech/Clerical

11/16 10:00 am to 11:00 am Design Office Lunch Area  
 11/17 8:30 am to 9:30 am .... Design Office Lunch Area

## 2107 - Maui FCU

11/16 8:30 am to 9:30 am ..... Office Conference Room

## 2107 - Maui County Employees FCU

11/18 10:30 am to 11:30 am ..... Breakroom

## 2107 - Valley Isle Community FCU

11/16 11:30 am to 12:30 pm ..... Kahului Lunch Room

## 2201 - Kahului Trucking & Storage/Bulk Sugar

11/17 8:30 am to 9:30 am ..... General & Bulk Sugar worksite

## 2201 - Kahului Stevedores

11/20 7:00 am to 11:00 am ..... McCabe worksite

## 2201 - McCabe Longshore Wharf Clerks

11/20 7:00 am to 11:00 am ..... McCabe worksite

## 2201 - Young Brothers Ltd. - Kahului

11/18 11:00 am to 12:00 pm ..... YB worksite

## 2201 - Young Brothers Ltd. - Lanai

11/18 7:00 am to 7:30 am ..... Time Clock  
 11/18 8:00 am to 12:00 pm ..... Lanai Union Hall

## 2201 - Young Brothers Ltd. - Molokai

11/16 11:00 am to 12:00 pm ..... Kaunakakai Wharf

## 2307 - Maui Pineapple Co. Haliimaile

11/16 4:00 am to 8:00 am ..... Labor Station - Haliimaile  
 11/16 1:30 pm to 4:00 pm ..... Labor Station - Haliimaile  
 11/17 4:00 am to 8:00 am ..... Labor Station - Haliimaile  
 11/17 1:30 pm to 4:00 pm ..... Labor Station - Haliimaile

## 2401 - Castle & Cooke LLC

11/16 5:00 am to 5:30 am ..... Koele Golf Break Room  
 11/16 7:00 am to 7:30 am ..... Koele Golf Break Room  
 11/16 8:00 am to 11:00 am ..... Lanai Union Hall  
 11/16 11:30 am to 12:30 pm ..... Koele Time Clock  
 11/17 5:00 am to 5:30 am .... Manele Golf Break Room  
 11/17 7:00 am to 12:00 pm ..... Lanai Union Hall  
 11/17 2:00 pm to 2:30 pm ... Manele Landscaping Time Clock

## 2403 - Kapalua Land Co. Ltd.

11/17 3:30 am to 4:00 am ..... Shop I  
 11/17 9:00 am to 9:30 am ..... Shop I  
 11/17 1:15 pm to 1:45 pm ..... Shop I  
 11/18 3:30 am to 4:00 am ..... Shop II  
 11/18 5:30 am to 6:00 am ..... Facilities Maint.  
 11/18 9:00 am to 9:30 am ..... Shop II  
 11/18 11:00 am to 11:30 am ..... Facilities Maint.  
 11/18 1:15 pm to 1:45 pm ..... Shop II  
 11/18 2:15 pm to 2:45 pm ..... Facilities Maint.

## 2404 - BEI - Maui

11/16 11:30 am to 12:00 pm ..... Break Room

## 2404 - Hawthorne Pacific Corp.

11/20 3:00 pm to 4:00 pm ..... Breakroom

## 2404 - Old Blue LLC - Maint. & Guest Svc.

11/19 1:15 pm to 1:30 pm .... Blue Course Maintenance Shop

## 2404 - Star Ice and Soda

11/20 5:30 am to 6:30 am ..... Parking Lot

## 2404 - Tri-Isle Trucking Inc.

11/19 6:00 am to 7:00 am ..... 860 Eha St. Break Room  
 11/20 5:30 am to 6:30 am .... Mokulele Baseyard Break Room

## 2404 - Wailea Resort (Maintenance)

11/18 12:00 pm to 1:30 pm ..... Maintenance Shop

## 2404 - Wailea Golf LLC (Guest Svc)

11/20 9:30 am to 10:15 am ..... Blue Course - Wailea  
 11/20 10:45 am to 11:45 am Gold & Emerald Course - Wailea

## 2405 - Island Auto Center/Island Honda

11/20 9:00 am to 11:00 am Island Auto Cntr Break Area

## 2405 - Valley Isle Motors

11/18 11:30 am to 12:30 pm ..... Puunene Lounge  
 11/19 11:30 am to 12:30 pm ..... Dairy Road Lounge

## 2405 - Maui Toyota

11/16 4:00 pm to 4:30 pm ..... Break Room

## 2406 - Ameron HC&D Maui

11/16 5:30 am to 8:30 am ..... Lunch Room  
 11/16 3:00 pm to 5:00 pm ..... Lunch Room

## 2406 - Hawaiian Cement

11/18 5:30 am to 8:30 am ..... Lunch Room  
 11/18 3:00 pm to 5:00 pm ..... Lunch Room

## 2406 - Maui Blocks

11/19 11:00 am to 12:00 pm ..... Lunch Room

## 2406 - Walker Industries Ltd.

11/17 6:30 am to 8:30 am ..... Lunch Room

## 2408 - Foodland Super Market Ltd.

11/17 10:00 am to 11:30 am ..... Lahaina Lunch Room  
 11/17 2:30 to 3:30 pm ..... Lahaina Lunch Room  
 11/18 9:00 am to 11:00 am ..... Kihei Lunch Room  
 11/18 2:00 pm to 3:30 pm ..... Kihei Lunch Room  
 11/19 7:00 am to 9:00 am ..... Pukalani Lunch Room  
 11/19 10:00 am to 11:00 am ..... Kahului Lunch Room  
 11/19 1:30 pm to 3:00 pm ..... Kahului Lunch Room  
 11/20 9:30 am to 10:30 am ..... Kahului Lunch Room  
 11/20 12:00 pm to 2:00 pm ..... Pukalani Lunch Room

## 2408 - Sack 'N Save

11/19 12:00 pm to 1:00 pm ..... Lunch Room  
 11/20 3:00 pm to 4:00 pm ..... Lunch Room

## 2408 - Star Supermarket

11/17 8:30 am to 9:30 am ..... Honokowai Lunch Room  
 11/17 1:00 pm to 2:00 pm ..... Honokowai Lunch Room  
 11/18 7:00 am to 8:30 am ..... Kihei Lunch Room  
 11/18 12:00 pm to 1:30 pm ..... Kihei Lunch Room

## 2409 - Honsador Lumber Inc.

11/16 6:30 am to 7:30 am ..... Break Area

## 2409 - Dunes at Maui Lani

11/18 1:00 pm to 1:30 pm ..... Shop

## 2409 - Island Movers Maui

11/20 6:00 am to 8:00 am ..... Lunch Room

## 2409 - Paradise Beverage

11/17 3:00 pm to 5:00 pm ..... Warehouse

## 2411 - Hale Makua

11/18 9:30 am to 10:30 am ..... Kahului Staff Dining  
 11/18 1:30 pm to 2:30 pm ..... Wailuku Staff Dining

## 2417 - Pukalani Golf Course

11/16 12:00 pm to 1:30 pm ..... Shop Area

## 2419 - The King Kamehameha Golf Course (MMK Maui)

11/17 11:30 am to 1:00 pm ..... Lunch Room

## 2420 - Kapalua Land Co. (Cart Barn)

11/18 11:00 am to 1:00 pm Village Center Conf. Room

## 2501 - Royal Lahaina Resort

11/16 6:00 am to 2:00 pm ..... Don the Beachcomber  
 11/16 2:30 pm to 6:00 pm ..... Stella's Café  
 11/17 6:00 am to 2:00 pm ..... Don the Beachcomber  
 11/17 2:30 pm to 4:00 pm ..... Stella's Café

## 2502 - Aston Maui Lu Resort

11/17 2:00 pm to 3:30 pm ..... Housekeeping  
 11/20 2:00 pm to 3:30 pm ..... Housekeeping

## 2502 - Tasty Crust Restaurant

11/16 9:00 am to 3:00 pm ..... Wailuku Union Hall  
 11/18 9:00 am to 3:00 pm ..... Wailuku Union Hall

## 2505 - The Westin Maui

11/14 6:30 am to 8:30 am ..... Worksite  
 11/14 9:30 am to 2:30 pm ..... Worksite  
 11/14 4:00 pm to 7:30 pm ..... Worksite  
 11/17 6:30 am to 8:30 am ..... Worksite  
 11/17 9:30 am to 2:30 pm ..... Worksite  
 11/17 4:00 pm to 7:30 pm ..... Worksite  
 11/18 9:30 am to 2:30 pm ..... Worksite  
 11/18 4:00 pm to 7:30 pm ..... Worksite  
 11/19 6:30 am to 8:30 am ..... Worksite  
 11/19 9:30 am to 2:30 pm ..... Worksite

## 2506 - Kaanapali Beach Hotel

11/18 6:00 am to 8:00 am ..... Employees Cafeteria  
 11/18 3:00 pm to 6:30 pm ..... Employees Cafeteria  
 11/19 6:00 am to 8:00 am ..... Employees Cafeteria  
 11/19 3:00 pm to 6:30 pm ..... Employees Cafeteria

## 2507 - Kaanapali Golf Management

11/18 12:00 pm to 3:00 pm ..... Main Shop  
 11/19 3:00 pm to 4:30 pm ..... Pro Shop

## 2507 - Kaanapali Operations Association

11/18 10:00 am to 11:00 am ..... Shop

## 2508 - Maui Eldorado Resort/AOAO

11/16 11:30 am to 2:00 pm ..... Lunch Room

## 2508 - Lahaina Shores

11/18 11:00 am to 1:00 pm ..... Lunch Room

## 2508 - Napili Shores Resort

11/16 8:00 am to 8:30 am ..... Lunch Room

## 2509 - Four Seasons Resort

11/16 6:00 am to 12:00 pm ..... Manele Lunch Room  
 11/16 1:00 pm to 6:00 pm ..... Manele Lunch Room  
 11/17 6:00 am to 12:00 pm ..... Koele Lunch Room  
 11/17 1:00 pm to 6:00 pm ..... Koele Lunch Room  
 11/18 8:00 am to 12:00 pm ..... Lanai Union Hall

# MAUI DIVISION—Polling Dates, Times and Locations (cont.)

**2511 - Makena Beach and Golf Resort**  
 11/16 6:30 am to 2:30 pm ..... Employee Cafeteria  
 11/17 8:00 am to 4:00 pm ..... Employee Cafeteria  
 11/18 10:00 am to 6:00 pm ..... Employee Cafeteria

**2515 - Wailea Ekahi**  
 11/18 6:30 am to 7:30 am ..... Maintenance Shop

**2516 - Hyatt Regency Maui**  
 11/15 8:00 am to 3:00 pm .... Outside Employee Cafeteria  
 11/16 8:00 am to 6:00 pm .... Outside Employee Cafeteria  
 11/17 8:00 am to 6:00 pm .... Outside Employee Cafeteria  
 11/18 8:00 am to 6:00 pm .... Outside Employee Cafeteria  
 11/19 8:00 am to 6:00 pm .... Outside Employee Cafeteria

**2518 - Hotel Wailea**  
 11/17 11:00 am to 12:30 pm ..... Loading Dock  
 11/20 2:00 pm to 4:00 pm ..... Loading Dock

**2520 - Grand Wailea Resort Hotel & Spa**  
 11/15 6:00 am to 5:00 pm ..... Training Room  
 11/16 6:00 am to 2:00 pm ..... Training Room  
 11/17 11:00 am to 7:00 pm ..... Training Room  
 11/18 11:00 am to 7:00 pm ..... Training Room  
 11/19 11:00 am to 7:00 pm ..... Training Room

**2522 - Maui Tropical Plantation**  
 11/16 9:00 am to 12:00 pm ..... Private Room

**2523 - The Ritz Carlton Kapalua**  
 11/15 10:00 am to 6:00 pm ..... Molokai Room  
 11/16 6:00 am to 2:00 pm ..... Molokai Room  
 11/18 10:00 am to 6:00 pm ..... Molokai Room  
 11/19 6:00 am to 2:00 pm ..... Molokai Room

**2523 - The Ritz Carlton Club & Residences, Kapalua Bay**  
 11/18 11:00 am to 4:00 pm ..... Cafeteria

**2525 - Maui Beach Hotel**  
 11/17 11:00 am to 1:00 pm ..... Wailuku Room  
 11/18 9:30 am to 11:00 am ..... Molokai Room

**4402 - Love's Bakery - Maui**  
 11/19 2:00 pm to 3:30 pm ..... Office Back Room

**4420 - Kaiser**  
 11/19 1:00 pm to 1:45 pm ..... Wailuku  
 11/19 2:00 pm to 2:45 pm ..... Maui Lani  
 11/19 3:30 pm to 4:00 pm ..... Kihei  
 11/20 1:30 pm to 2:00 pm ..... Lahaina

**4420 - Straub Clinic - Lanai**  
 11/18 8:00 am to 12:00 pm ..... Lanai Union Hall

**4420 - Liberty Dialysis**  
 11/17 1:30 pm to 3:30 pm ..... Wailuku Union Hall  
 11/18 1:30 pm to 3:30 pm ..... Wailuku Union Hall

# KAUAI DIVISION—Polling Dates, Times and Locations

**3105 - Gay & Robinson**  
 11/16 6:00 am to 7:15 am ..... Factory Parking Lot  
 11/16 7:30 am to 10:30 am ..... Pakala Field Office  
 11/16 11:00 am to 11:30 am ..... Pakala Shop  
 11/16 11:30 am to 12:00 pm ..... Lihue Bulk Plant  
 11/16 2:00 pm to 4:00 pm ..... Factory Parking Lot  
 11/17 6:00 am to 4:00 pm ..... Thrifty Mart Store  
 11/18 6:00 am to 4:00 pm ..... Thrifty Mart Store  
 11/20 11:30 am to 12:30 pm ..... Pakala Field Office

**3201 - Nawiliwili Stevedores**  
 11/20 1:00 pm to 2:30 pm ..... Pier 2, Nawiliwili Pier

**3201 - Young Brothers Ltd. - Kauai**  
 11/19 9:30 am to 10:30 am .... Breakroom, Young Bros. Ltd.

**3401 - Kauai Coffee**  
 11/16 6:00 am to 7:00 am ..... Field Office  
 11/16 11:00 am to 11:30 am ..... Welding Shop

**3402 - Foodland Princeville**  
 11/19 1:00 pm to 5:00 pm ..... Princeville Foodland  
 11/20 8:00 am to 12:00 pm ..... Princeville Foodland

**3402 - Foodland Waipouli**  
 11/19 8:00 am to 12:00 pm ..... Waipouli Foodland  
 11/20 1:00 pm to 4:00 pm ..... Waipouli Foodland

**3403 - Brewer Environmental**  
 11/19 6:45 am to 7:00 am ..... Puhi - Main Office  
 11/20 6:15 am to 6:30 am ..... Port Allen

**3403 - Kauai Golf Management**  
 11/18 1:30 pm to 2:00 pm ..... Maintenance Lunch Area

**3404 - Up-to-Date Cleaners**  
 11/18 11:45 am to 1:00 pm ..... Laundry/Kitchen

**3406 - Meadow Gold Dairies**  
 11/17 1:00 pm to 2:00 pm ..... Puhi Plant  
 11/20 1:30 pm to 2:30 pm ..... Puhi Plant

**3408 - MidPac Auto**  
 11/20 1:00 pm to 2:00 pm ..... Lihue Lunch Room

**3407 - Kukuiolono Park & Golf Course**  
 11/19 1:30 pm to 1:45 pm ..... Maintenance

**3408 - Hawthorne Pacific**  
 11/20 6:45 am to 7:00 am ..... Lunch Area - Lihue

**3408 - Pacific Service & Development Corp.**  
 11/16 7:30 am to 8:00 am ..... Kalaheo  
 11/16 8:30 am to 9:00 am ..... Hanapepe  
 11/16 9:30 am to 10:30 am ..... Lihue  
 11/16 11:00 am to 11:30 am ..... Kapaa

**3408 - Servco Kauai Toyota**  
 11/18 10:00 am to 10:15 am ..... Shop - Lihue

**3409 - Kauai Trees & Palms**  
 11/18 7:00 am to 8:00 am ..... Office

**3410 - Wilcox Memorial Hospital**  
 11/19 7:00 am to 9:00 am ..... HR Lobby  
 11/19 10:00 am to 2:00 pm ..... HR Lobby  
 11/19 3:00 pm to 5:00 pm ..... HR Lobby

**3411 - Kauai Commercial**  
 11/17 2:30 pm to 4:30 pm ..... Timesheet Box

**3504 - Princeville Operating Co.**  
 11/17 6:30 am to 8:30 am ..... Makai Shop  
 11/17 1:30 pm to 3:30 pm ..... Prince Shop  
 11/18 6:30 am to 8:30 am ..... Makai Shop  
 11/18 1:30 pm to 3:30 pm ..... Prince Shop

**3504 - Princeville Utilities Co.**  
 11/18 11:00 am to 12:00 pm ..... STP Shop

**3503 - Kauai Island Tours**  
 11/16 8:30 am to 9:30 am ..... Lihue ILWU Hall

**3510 - Poipu Bay Golf**  
 11/20 9:30 am to 11:30 am ..... Maintenance Shop  
 11/20 12:00 pm to 12:30 pm ..... Cart Barn Poipu

**3511 - Grand Hyatt Kauai**  
 11/16 6:00 am to 6:00 pm ..... Hallway next to HR  
 11/17 6:00 am to 6:00 pm ..... Hallway next to HR  
 11/18 6:00 am to 6:00 pm ..... Hallway next to HR  
 11/19 6:00 am to 6:00 pm ..... Hallway next to HR

**3514 - Kauai Lagoons Golf Club (Mori Golf LLC)**  
 11/17 11:00 am to 12:00 pm ..... Pro Shop  
 11/17 12:30 pm to 1:00 pm ..... Maintenance Shop  
 11/19 11:00 am to 12:00 pm ..... Pro Shop  
 11/19 12:30 pm to 1:00 pm ..... Maintenance Shop

**3515 - St. Regis Princeville Resort**  
 11/16 7:00 am to 4:00 pm ..... Cafeteria  
 11/17 7:00 am to 4:00 pm ..... Cafeteria

**4402 - Love's Bakery - Kauai**  
 11/19 2:00 pm to 3:00 pm ..... Thrift Store

# OAHU DIVISION—Polling Dates, Times and Locations

## 4201 - Hawaii Stevedores

11/15 6:00 am to 8:30 am ... P51A Horizon Check-in Area  
 11/15 9:15 am to 9:45 am ..... P1A Restroom Area  
 11/15 12:00 pm to 12:30 pm Barbers Point Check-in Area  
 11/15 10:30 pm to 12:00 am P51A Horizon Check-in Area  
 11/16 6:00 am to 8:30 am ... P51A Horizon Check-in Area  
 11/16 9:00 am to 9:30 am ..... P33 Pasha Check-in Area  
 11/16 10:30 am to 11:30 am ..... P1A Restroom Area  
 11/16 12:00 pm to 1:00 pm ..... P35 HSI Ofc  
 11/16 5:00 pm to 7:00 pm ..... P51A Horizon Check-in Area  
 11/18 6:30 am to 7:30 am ..... P51A Horizon Check-in Area  
 11/18 9:00 am to 10:00 am ..... P51A Autostack Break Room  
 11/18 10:45 am to 11:30 am ..... P1A Restroom Area  
 11/18 12:00 pm to 1:00 pm ..... P35 HSI Ofc  
 11/18 10:30 pm to 12:00 am .... P51A Horizon Check-in Area  
 11/19 6:00 am to 8:00 am ..... P51A Horizon Check-in Area  
 11/19 9:00 am to 10:00 am ..... P51A Autostack Break Room  
 11/19 11:00 am to 12:00 pm ..... P1A Restroom Area  
 11/19 12:30 pm to 1:30 pm ..... P35 HSI Ofc

## 4201 - Matson Terminals Inc.

11/15 6:15 am to 7:45 am ..... Pier 52 Break Room  
 11/15 11:10 am to 1:15 pm ..... Pier 52 M.O. Break Room  
 11/15 5:15 pm to 6:45 pm ..... Pier 52 Break Room  
 11/16 11:10 am to 1:15 pm ... Pier 52 Crane & Strad Break Room  
 11/16 5:15 pm to 6:45 pm ..... Pier 52 Crane & Strad Break Room  
 11/19 6:15 am to 7:45 am ..... Pier 52 Break Room  
 11/19 9:15 am to 10:30 am ..... MHR Office  
 11/19 11:30 am to 1:15 pm ..... MHR Office  
 11/19 5:15 pm to 6:30 pm ..... Pier 52 Break Room

## 4201 - McCabe, Hamilton & Renny

11/15 6:15 am to 7:45 am ..... Pier 52 Break Room  
 11/15 8:30 am to 8:40 am ..... Pier 1 Break Room  
 11/15 11:10 am to 1:15 pm ..... Pier 52 M.O. Break Room  
 11/15 5:15 pm to 6:45 pm ..... Pier 52 Break Room  
 11/16 6:15 am to 7:45 am ..... Pier 10 Break Area  
 11/16 8:45 am to 9:30 am ..... Pier 52 Break Room  
 11/16 11:10 am to 1:15 pm ... Pier 52 Crane & Strad Break Room  
 11/16 2:00 pm to 2:10 pm ..... Pier 1 Break Room  
 11/16 5:15 pm to 6:45 pm ..... Pier 52 Crane & Strad Break Room  
 11/18 9:15 am to 10:00 am ..... Barbers Point Warehouse  
 11/18 12:30 pm to 1:30 pm ..... Pier 52 Break Room  
 11/18 2:30 pm to 3:00 pm ..... Pier 1 Break Room  
 11/18 7:15 pm to 7:45 pm ..... Pier 1 Break Room  
 11/19 6:15 am to 7:45 am ..... Pier 52 Break Room  
 11/19 9:15 am to 10:30 am ..... MHR Office  
 11/19 11:30 am to 1:15 pm ..... MHR Office  
 11/19 2:00 pm to 2:45 pm ..... Pier 1 Break Room  
 11/19 5:15 pm to 6:30 pm ..... Pier 52 Break Room

## 4202 - Honolulu Terminals Clerks

11/16 11:00 am to 1:00 pm ..... P51 Matson Auto Yard  
 11/16 2:00 pm to 3:00 pm ..... P2 Auto Yard Break Room  
 11/16 5:00 pm to 6:00 pm ..... P51 Matson Container Gate  
 11/17 11:00 am to 1:00 pm ..... P 51 Matson Auto Yard  
 11/17 2:00 pm to 3:00 pm ..... P2 Auto Yard Break Room  
 11/17 5:00 pm to 6:00 pm ..... P51 Matson Container Gate

## 4202 - Hawaii Stevedores Inc. Clerks

11/16 8:00 am to 9:00 am ..... P1 NYK Gate  
 11/17 8:00 am to 9:00 am ..... P1 NYK Gate

## 4203 - Hawaii Stevedores Inc. Maintenance

11/18 12:00 pm to 12:15 pm ..... Pier 35 Lunch Room  
 11/18 12:50 pm to 1:00 pm ..... Pier 2 Break Room

## 4203 - Horizon Maintenance

11/19 10:00 am to 10:15 am ..... Pier 51A Breakroom  
 11/20 10:00 am to 10:15 am ..... Pier 51A Breakroom  
 11/20 4:30 pm to 5:00 pm ..... Pier 51A Breakroom

## 4203 - Matson Maintenance

11/18 6:00 am to 7:00 am Pier 52 Main Gate Entrance  
 11/18 3:30 pm to 4:30 pm Pier 52 Main Gate Entrance  
 11/19 6:00 am to 7:00 am Pier 52 Main Gate Entrance  
 11/19 3:30 pm to 4:30 pm Pier 52 Main Gate Entrance

## 4203 - McCabe, Hamilton & Renny Maintenance

11/20 12:25 pm to 12:45 pm ..... Pier 23 Break Room

## 4204 - Horizon CY

11/20 11:00 am to 1:00 pm ..... Pier 51 Horizon Check-in Area

## 4204 - Matson CFS/CY

11/20 5:00 am to 6:00 am ..... CY Matson Breakroom  
 11/20 6:00 am to 11:00 am .... CFS Matson Breakroom  
 11/20 1:00 pm to 3:00 pm ..... CFS Matson Breakroom  
 11/20 3:00 pm to 4:00 pm ..... CY Matson Breakroom

## 4207 - Matson Navigation Clerical

11/20 6:00 am to 11:00 am .... CFS Matson Breakroom  
 11/20 1:00 pm to 3:00 pm ..... CFS Matson Breakroom

## 4209 - Young Brothers Ltd.

11/20 6:00 am to 7:30 am ..... P-39 Break Room  
 11/20 10:30 am to 1:00 pm ..... Learning Center  
 11/20 1:30 pm to 1:50 pm ..... P-21 Break Room  
 11/20 2:00 pm to 2:30 pm ..... P-40 Maintenance Shop

## 4301 - Dole Food Company (Fresh Fruit)

11/19 8:00 am to 4:30 pm ..... Fresh Fruit Lunch Room  
 11/20 8:00 am to 1:00 pm ..... Fresh Fruit Lunch Room

## 4305 - Dole Food Company (Wahiawa)

11/16 6:00 am to 7:00 am ..... Truck Shed  
 11/16 3:00 pm to 4:00 pm ..... Truck Shed  
 11/17 6:00 am to 7:00 am ..... Truck Shed  
 11/17 11:00 am to 1:00 pm ..... Packing Plant  
 11/17 3:00 pm to 4:00 pm ..... Truck Shed

## 4402 - Love's Bakery Inc.

11/16 1:00 am to 9:00 am ..... Lunch Room  
 11/17 8:00 am to 4:00 pm ..... Lunch Room  
 11/18 8:00 am to 6:00 pm ..... Lunch Room

## 4404 - Macsteel Service Centers

11/16 10:30 am to 12:30 pm .... Roll Form Lunch Room

## 4404 - Pepsi Bottling Group

11/16 2:00 am to 5:30 am ..... Lobby  
 11/16 7:00 am to 11:00 am ..... Lobby  
 11/16 12:00 pm to 2:00 pm ..... Lobby  
 11/17 3:00 am to 6:00 am ..... Lunchroom  
 11/17 9:00 am to 12:00 pm ..... Lunchroom  
 11/17 1:00 pm to 3:00 pm ..... Lunchroom  
 11/18 6:00 am to 9:00 am ..... Lunchroom  
 11/18 10:00 am to 1:00 pm ..... Lunchroom  
 11/18 4:00 pm to 5:30 pm ..... Lunchroom  
 11/19 6:00 am to 9:00 am ..... Lunchroom  
 11/19 11:00 am to 3:00 pm ..... Lunchroom

## 4404 - Phoenix V LLC

11/16 6:00 am to 7:00 am ..... BEI Honolulu  
 11/16 2:00 pm to 3:00 pm ..... Campbell

## 4404 - Simmons

11/18 11:30 am to 12:00 pm ..... Lunch Room

## 4405 - Eggs Hawaii

11/18 12:30 pm to 2:00 pm ..... Lunch Room

## 4405 - Foodland Super Market Ltd. Laie

11/16 8:00 am to 9:30 am ..... Lunch Room  
 11/16 4:45 pm to 6:30 pm ..... Lunch Room

11/17 12:15 pm to 1:15 pm ..... Lunch Room  
 11/18 9:45 am to 11:00 am ..... Lunch Room  
 11/18 2:30 pm to 4:00 pm ..... Lunch Room  
 11/19 10:00 am to 10:45 am ..... Lunch Room  
 11/19 6:30 pm to 7:30 pm ..... Lunch Room  
 11/20 8:00 am to 10:00 am ..... Lunch Room

## 4405 - Foodland Super Market Ltd. Pupukea

11/16 10:15 am to 11:30 am ..... Lunch Room  
 11/16 3:00 pm to 4:00 pm ..... Lunch Room  
 11/17 10:30 am to 11:30 am ..... Lunch Room  
 11/18 8:00 am to 9:00 am ..... Lunch Room  
 11/18 4:45 pm to 6:00 pm ..... Lunch Room  
 11/19 11:30 am to 12:15 pm ..... Lunch Room  
 11/19 3:00 pm to 4:00 pm ..... Lunch Room  
 11/20 10:45 am to 12:45 pm ..... Lunch Room

## 4405 - Foodland Super Market Ltd. Wahiawa

11/16 12:15 pm to 1:15 pm ..... Lunch Room  
 11/17 8:00 am to 9:30 am ..... Lunch Room  
 11/17 3:00 pm to 4:00 pm ..... Lunch Room  
 11/18 11:45 am to 12:45 pm ..... Lunch Room  
 11/19 1:00 pm to 1:30 pm ..... Lunch Room  
 11/19 4:45 pm to 5:45 pm ..... Lunch Room  
 11/20 2:00 pm to 3:00 pm ..... Lunch Room

## 4405 - Foodland Super Market Ltd. Mililani

11/16 7:30 am to 8:30 am ..... Lunch Room  
 11/16 5:00 pm to 6:00 pm ..... Lunch Room  
 11/17 2:00 pm to 2:45 pm ..... Lunch Room  
 11/18 9:30 am to 10:15 am ..... Lunch Room  
 11/18 6:30 pm to 7:15 pm ..... Lunch Room  
 11/19 2:30 pm to 3:30 pm ..... Lunch Room  
 11/20 8:00 am to 8:45 am ..... Lunch Room

## 4405 - Foodland Super Market Ltd. Waipio

11/16 9:00 am to 9:45 am ..... Lunch Room  
 11/16 3:30 pm to 4:30 pm ..... Lunch Room  
 11/17 12:15 pm to 1:00 pm ..... Lunch Room  
 11/17 3:15 pm to 4:00 pm ..... Lunch Room  
 11/18 10:45 am to 11:30 am ..... Lunch Room  
 11/18 4:45 pm to 6:00 pm ..... Lunch Room  
 11/19 12:30 pm to 1:30 pm ..... Lunch Room  
 11/20 9:15 am to 10:15 am ..... Lunch Room

## 4405 - Foodland Super Market Ltd. Pearl City

11/16 10:15 am to 11:00 am ..... Lunch Room  
 11/16 2:00 pm to 3:00 pm ..... Lunch Room  
 11/17 11:00 am to 11:45 am ..... Lunch Room  
 11/17 6:45 pm to 7:30 pm ..... Lunch Room  
 11/18 12:00 pm to 12:45 pm ..... Lunch Room  
 11/18 3:30 pm to 4:15 pm ..... Lunch Room  
 11/19 8:45 am to 9:45 am ..... Lunch Room  
 11/19 4:00 pm to 4:45 pm ..... Lunch Room  
 11/20 2:00 pm to 3:00 pm ..... Lunch Room

## 4405 - Foodland Super Market Ltd. Ewa Town

11/16 11:30 am to 12:30 pm ..... Lunch Room  
 11/17 9:00 am to 10:15 am ..... Lunch Room  
 11/17 5:00 pm to 6:00 pm ..... Lunch Room  
 11/18 1:30 pm to 2:15 pm ..... Lunch Room  
 11/19 10:30 am to 11:30 am ..... Lunch Room  
 11/19 5:30 pm to 7:00 pm ..... Lunch Room  
 11/20 11:00 am to 12:30 pm ..... Lunch Room

## 4405 - Foodland Super Market Ltd. School St.

11/16 7:30 am to 8:30 am ..... Lunch Room  
 11/16 3:15 pm to 4:15 pm ..... Lunch Room  
 11/17 10:45 am to 11:45 am ..... Lunch Room  
 11/18 1:00 pm to 1:30 pm ..... Lunch Room  
 11/19 2:30 pm to 3:00 pm ..... Lunch Room  
 11/20 3:00 pm to 3:30 pm ..... Lunch Room

# OAHU DIVISION—Polling Dates, Times and Locations (cont.)

## 4405 - Foodland Super Market Ltd. Dillingham

11/16 9:00 am to 10:15 am ..... Lunch Room  
 11/16 4:45 pm to 6:00 pm ..... Lunch Room  
 11/17 1:00 pm to 2:00 pm ..... Lunch Room  
 11/18 7:00 am to 8:15 am ..... Lunch Room  
 11/18 2:00 pm to 3:15 pm ..... Lunch Room  
 11/19 12:15 pm to 1:15 pm ..... Lunch Room  
 11/20 1:00 pm to 2:30 pm ..... Lunch Room

## 4405 - Foodland Super Market Ltd. Kaneohe

11/16 11:00 am to 12:15 pm ..... Lunch Room  
 11/17 9:00 am to 10:00 am ..... Lunch Room  
 11/17 2:45 pm to 4:15 pm ..... Lunch Room  
 11/18 9:00 am to 10:15 am ..... Lunch Room  
 11/18 4:00 pm to 5:30 pm ..... Lunch Room  
 11/19 9:00 am to 10:00 am ..... Lunch Room  
 11/19 3:45 pm to 5:00 pm ..... Lunch Room  
 11/20 10:00 am to 11:15 am ..... Lunch Room

## 4405 - Foodland Super Market Ltd. Kailua

11/16 1:30 pm to 2:30 pm ..... Lunch Room  
 11/17 7:30 am to 8:30 am ..... Lunch Room  
 11/17 4:45 pm to 5:45 pm ..... Lunch Room  
 11/18 10:45 am to 11:30 am ..... Lunch Room  
 11/19 10:30 am to 11:30 am ..... Lunch Room  
 11/19 5:30 pm to 6:30 pm ..... Lunch Room  
 11/20 8:00 am to 9:30 am ..... Lunch Room

## 4405 - Foodland Super Market Ltd. Ala Moana

11/16 7:00 am to 8:00 am ..... Lunch Room  
 11/16 4:45 pm to 6:00 pm ..... Lunch Room  
 11/17 1:15 pm to 2:45 pm ..... Lunch Room  
 11/18 7:30 am to 8:30 am ..... Lunch Room  
 11/18 3:30 pm to 4:45 pm ..... Lunch Room  
 11/19 10:00 am to 11:30 am ..... Lunch Room  
 11/19 2:30 pm to 3:45 pm ..... Lunch Room  
 11/20 2:00 pm to 3:15 pm ..... Lunch Room

## 4405 - Foodland Super Market Ltd. Beretania

11/16 8:30 am to 9:30 am ..... Lunch Room  
 11/17 11:15 am to 12:45 pm ..... Lunch Room  
 11/18 10:45 am to 11:45 am ..... Lunch Room  
 11/19 6:15 pm to 7:15 pm ..... Lunch Room  
 11/20 7:00 am to 8:30 am ..... Lunch Room

## 4405 - Foodland Supermarket Ltd. Market City

11/16 10:00 am to 11:15 am ..... Lunch Room  
 11/16 2:45 pm to 4:00 pm ..... Lunch Room  
 11/17 4:00 pm to 5:30 pm ..... Lunch Room  
 11/18 9:00 am to 10:15 am ..... Lunch Room  
 11/18 5:00 pm to 6:30 pm ..... Lunch Room  
 11/19 8:00 am to 9:30 am ..... Lunch Room  
 11/19 4:15 pm to 5:30 pm ..... Lunch Room  
 11/20 11:30 am to 12:45 pm ..... Lunch Room

## 4405 - Foodland Super Market Ltd. Hawaii Kai

11/16 12:45 pm to 2:00 pm ..... Lunch Room  
 11/17 9:00 am to 10:30 am ..... Lunch Room  
 11/17 6:15 pm to 7:15 pm ..... Lunch Room  
 11/18 1:15 pm to 2:30 pm ..... Lunch Room  
 11/19 12:00 pm to 1:15 pm ..... Lunch Room  
 11/20 9:30 am to 10:45 am ..... Lunch Room

## 4405 - Sack 'N Save Nanakuli

11/16 9:00 am to 1:00 pm ..... Lunch Room  
 11/16 2:00 pm to 5:00 pm ..... Lunch Room  
 11/18 9:00 am to 1:00 pm ..... Lunch Room  
 11/18 2:00 pm to 5:00 pm ..... Lunch Room

## 4405 - Sack 'N Save Stadium

11/16 9:00 am to 1:00 pm ..... Lunch Room  
 11/16 2:00 pm to 5:00 pm ..... Lunch Room  
 11/18 9:00 am to 1:00 pm ..... Lunch Room  
 11/18 2:00 pm to 5:00 pm ..... Lunch Room

## 4405 - Hawaii Logistics

11/16 10:00 am to 11:00 am ..... Unicol  
 11/16 12:30 pm to 4:00 pm ..... Satellite  
 11/16 4:30 pm to 5:30 pm ..... Main  
 11/17 1:00 pm to 3:00 pm ..... Main  
 11/17 3:30 pm to 4:30 pm ..... Satellite  
 11/17 6:30 pm to 7:30 pm ..... Unicol

## 4406 - The Honolulu Advertiser

11/14 9:00 pm to 11:00 pm ..... Kapolei  
 11/15 9:00 am to 11:00 am ..... Kapiolani  
 11/16 1:00 am to 4:00 am ..... Kapiolani  
 11/16 2:00 pm to 5:00 pm ..... Kapolei  
 11/17 9:00 am to 12:00 pm ..... Kapolei  
 11/18 11:00 am to 3:00 pm ..... Kapolei

## 4406 - Honolulu Star Bulletin/MidWeek

11/18 5:00 am to 7:00 am ..... Break Area  
 11/19 5:00 am to 7:00 am ..... Break Area

## 4407 - Oahu One Credit Union

11/17 8:30 am to 9:30 am ..... Lunch Room

## 4409 - Island Movers Inc.

11/17 6:00 am to 7:30 am ..... HHG Ops. Lawehana St. (Salt Lake)  
 11/17 2:30 pm to 3:30 pm ..... Pier 42 Guard Shack Area  
 11/18 6:00 am to 7:00 am ..... Sears Distribution Pkg. Lot (Pearl City)  
 11/18 3:00 pm to 4:30 pm ..... HHG Ops. Lawehana St. (Salt Lake)  
 11/19 5:00 am to 6:45 am ..... Pier 42 CFS Dock  
 11/19 4:00 pm to 5:00 pm ..... HHG Ops. Lawehana St. (Salt Lake)  
 11/20 6:00 am to 7:00 am ..... Sears Distribution Pkg. Lot (Pearl City)  
 11/20 2:00 pm to 3:00 pm ..... Pier 42 Guard Shack Area

## 4410 - Honolulu Ford

11/16 8:00 am to 11:30 am ..... Shop Lunch Room  
 11/16 12:00 pm to 3:30 pm ..... Shop Lunch Room

## 4412 - Servco Pacific Inc.

11/17 9:00 am to 10:00 am ..... SAPC Break Room  
 11/17 10:30 am to 11:30 am ..... Vehicle Processing Center Break Room  
 11/17 12:30 pm to 2:00 pm ..... SAH Break Room  
 11/18 9:00 am to 9:30 am ..... Servco Used Car Break Room  
 11/18 10:30 am to 11:00 am ..... Kaimuki Toyota Break Room  
 11/18 11:30 am to 12:30 pm ..... Motor Imports Break Room  
 11/19 9:30 am to 10:00 am ..... SFIE/SAL Waipahu Break Room  
 11/19 11:30 am to 12:30 pm ..... SFIE/SAL Waipahu Break Room  
 11/20 9:30 am to 10:00 am ..... SAW Windward Conf. Room  
 11/20 1:30 pm to 2:30 pm ..... SAW Windward Conf. Room  
 11/20 3:30 pm to 4:00 pm ..... Kaimuki Toyota Break Room

## 4414 - Ball Corporation

11/17 6:30 am to 7:30 am ..... Lunch Room

## 4415 - Diamond Head Memorial Park

11/18 11:30 am to 12:00 pm ..... Lunch Room

## 4415 - Hawaiian Memorial Park

11/17 11:30 am to 1:00 pm ..... Shop Area

## 4415 - Mililani Memorial Park

11/17 2:45 pm to 3:30 pm ..... Lunch Room

## 4415 - Mililani Town Association

11/18 2:15 pm to 3:00 pm ..... Shop Area  
 11/18 4:15 pm to 5:00 pm ..... Shop Area

## 4415 - Nuuanu Memorial Park

11/17 6:45 am to 7:15 am ..... Lunch Room

## 4415 - Oahu Cemetery

11/17 7:30 am to 8:00 am ..... Lunch Room

## 4415 - Valley of the Temples

11/19 11:00 am to 12:30 pm ..... Shop Area

## 4419 - Hawthorne Pacific

11/17 11:00 am to 1:00 pm ..... Waipahu (Mechanic's Lunch Room)

## 4420 - Hawaii Medical Center

11/16 11:15 am to 1:15 pm ..... Conference Room  
 11/16 4:00 pm to 5:00 pm ..... Conference Room  
 11/17 7:00 am to 9:00 am ..... Conference Room  
 11/19 4:00 pm to 5:00 pm ..... Conference Room

## 4420 - Hawaii Pacific Health

11/17 6:30 am to 8:00 am ..... Nimitz Warehouse  
 11/17 11:00 am to 12:30 pm ..... Harbor Court Lunch Room  
 11/17 1:30 pm to 2:00 pm ..... Kapiolani Medical Cntr for W&C  
 11/18 6:30 am to 8:00 am ..... Straub Mailroom  
 11/18 11:00 am to 2:00 pm ..... First Insurance Cntr Room 980  
 11/19 6:30 am to 8:00 am ..... Straub Mailroom  
 11/19 11:00 am to 2:00 pm ..... First Insurance Cntr Room 980  
 11/20 11:00 am to 2:00 pm ..... First Insurance Cntr Room 980

## 4420 - Kaiser

11/16 9:00 am to 10:30 am ..... Honolulu Lunch Room  
 11/16 2:00 pm to 3:15 pm ..... Moanalua Lunch Room  
 11/17 9:45 am to 10:30 am ..... Mapunapuna X-Ray Room  
 11/17 11:00 am to 1:30 pm ..... Moanalua Lunch Room  
 11/17 2:15 pm to 3:00 pm ..... Koolau X-Ray Room  
 11/19 11:00 am to 12:00 pm ..... Waipio X-Ray Room  
 11/19 2:30 pm to 3:00 pm ..... Nanaikeola X-Ray Room  
 11/19 11:00 pm to 12:30 am ..... Moanalua Lunch Room  
 11/20 7:00 am to 10:45 am ..... Moanalua Lunch Room  
 11/20 11:15 am to 12:15 pm ..... Waipio X-Ray Room  
 11/20 1:00 pm to 2:00 pm ..... Honolulu Lunch Room

## 4420 - Kapiolani Medical Center

11/18 6:30 am to 8:30 am ..... KMCWC Cafeteria  
 11/18 2:00 pm to 5:00 pm ..... KMCWC Cafeteria  
 11/19 12:30 pm to 2:30 pm ..... Straub Beretania Clinic  
 11/19 3:30 pm to 6:30 pm ..... ILWU Union Hall

## 4420 - Kuakini Medical Center

11/19 9:00 am to 1:00 pm ..... Cafeteria  
 11/19 2:00 pm to 5:00 pm ..... Cafeteria  
 11/20 6:00 am to 8:00 am ..... Cafeteria  
 11/20 10:00 am to 2:00 pm ..... Cafeteria

## 4420 - Liberty Dialysis

11/16 4:00 pm to 5:00 pm ..... Conference Room HMC - East  
 11/18 12:00 pm to 1:30 pm ..... Leeward Dialysis  
 11/18 2:30 pm to 4:00 pm ..... Waipahu Dialysis  
 11/19 1:00 pm to 2:00 pm ..... Waianae Dialysis  
 11/19 4:00 pm to 5:00 pm ..... Conference Room HMC - East

## 4420 - Sodexo/Sodexo POM

11/17 9:00 am to 1:30 pm ..... Cafeteria  
 11/17 3:30 pm to 7:00 pm ..... Cafeteria  
 11/18 9:00 am to 1:30 pm ..... Cafeteria  
 11/18 3:30 pm to 7:00 pm ..... Cafeteria  
 11/19 9:00 am to 1:00 pm ..... Cafeteria  
 11/19 3:30 pm to 7:00 pm ..... Cafeteria

## 4420 - Straub Clinic & Hospital

11/16 7:00 am to 10:00 am ..... Cafeteria  
 11/16 9:00 am to 10:00 am ..... Hawaii Kai  
 11/16 12:00 pm to 1:00 pm ..... Kailua  
 11/16 2:00 pm to 3:00 pm ..... Kaneohe  
 11/16 3:30 pm to 7:00 pm ..... Cafeteria  
 11/17 7:00 am to 10:00 am ..... Cafeteria  
 11/17 9:00 am to 10:00 am ..... Mililani  
 11/17 11:30 am to 1:30 pm ..... Pearlridge  
 11/17 12:00 pm to 1:30 pm ..... Cafeteria  
 11/17 3:00 pm to 4:00 pm ..... Princess K  
 11/17 3:00 pm to 5:00 pm ..... Cafeteria  
 11/18 7:00 am to 10:00 am ..... Cafeteria  
 11/18 11:00 am to 1:30 pm ..... Cafeteria  
 11/18 12:00 pm to 1:00 pm ..... Kaneohe

# OAHU DIVISION—Polling Dates, Times and Locations (cont.)

11/18	2:00 pm to 3:00 pm	Kailua
11/18	4:00 pm to 5:00 pm	Hawaii Kai
11/18	6:00 pm to 7:00 pm	Princess K
11/19	7:00 am to 10:00 am	Cafeteria
11/19	9:00 am to 10:00 am	Pearlridge
11/19	11:00 am to 1:30 pm	Cafeteria
11/19	11:30 am to 1:00 pm	Mililani
11/20	7:00 am to 1:00 pm	Cafeteria
11/20	8:00 am to 10:00 am	Milner
11/20	11:00 am to 2:00 pm	Palmer
<b>4420 - Wahiawa General Hospital</b>		
11/19	11:00 am to 12:00 pm	Classroom
11/19	1:30 pm to 3:30 pm	Classroom
<b>4421 - Luana Hills</b>		
11/19	9:30 am to 10:00 am	Shop Area

<b>4414 - Pearl Country Club</b>		
11/17	8:30 am to 10:30 am	Restaurant
11/17	11:00 am to 12:00 pm	Shop
<b>4421 - Queen Emma Gardens</b>		
11/19	2:00 pm to 2:30 pm	Downtown
<b>4421 - Waikele Golf Club</b>		
11/18	9:00 am to 9:30 am	Shop
<b>4422 - Air Liquide America LP</b>		
11/18	6:00 am to 7:30 am	Drivers Room
<b>4428 - Hawaii Job Corps</b>		
11/19	8:00 am to 9:00 am	Lunch Room
11/19	2:15 pm to 3:15 pm	Lunch Room

<b>4436 - Dole Plantation Store</b>		
11/16	9:00 am to 5:30 pm	Lunch Room
11/18	9:00 am to 1:30 pm	Lunch Room
<b>4521 - Turtle Bay Resort Golf</b>		
11/17	11:00 am to 12:00 pm	Maintenance Lunch Room
<b>4524 - Ohana Honolulu Airport Hotel</b>		
11/16	6:00 am to 8:00 am	Lunch Room
11/16	9:30 am to 12:00 pm	Lunch Room
11/16	1:30 pm to 4:15 pm	Lunch Room
11/18	9:30 am to 12:00 pm	Lunch Room
11/18	2:30 pm to 5:30 pm	Lunch Room
11/19	6:00 am to 8:00 am	Lunch Room
11/19	9:30 am to 12:00 pm	Lunch Room
11/19	2:30 pm to 5:30 pm	Lunch Room

## 25th ILWU Convention —continued from page 1

Membership meetings will be held to give members a report of what happened at the Convention and to ratify the Convention actions. A secret ballot vote is required to approve the dues increase and constitutional amendments.

## Do You Have a “Green Card”?

If you were born in another country and are in the U.S. as a lawful permanent resident, you know what a “green card” is. A green card allows an immigrant to live and work in the U.S. legally. **But since 1989, a green card must be renewed every ten years.**

Unfortunately, some workers are being reminded about this reality when their expired green cards prevent them from continuing to work. In some cases, it’s because the worker is applying for a new job. In other cases, it’s because the worker’s current company is being taken over by new management which requires all employees to re-apply.

By law, all employers are required to complete an **I-9 form** within three business days of hiring anyone. The form requires the employer to verify the prospective employee’s authorization to work in the U.S. by reviewing documents that establish identity and work authorization. All documents must be unexpired.

If you are not a U.S. citizen but are a lawful permanent resident with a green card, check the front of your green card to see if it has an expiration date. You should file an **I-90 form** to renew your green card six months before the expiration date. The fee is \$370, including fingerprinting.

You will not lose your permanent resident status if your green card is expired, but you may have difficulty getting a new job without a valid green card. Also, you should carry your green card with you at all times. So be sure to renew your green card before the expiration date.

## Preliminary Results of ILWU International Election

Following are the unofficial election results for ILWU International Officers and Executive Board Members from Hawaii. The VOICE went to press before the October 15, 2009, meeting of the International Executive Board which must decide on challenges to the election and must certify the official election results.

	<b>President</b>	<b>VP Mainland</b>	<b>VP Hawaii</b>	<b>Sec.-Treas.</b>
<b>ILWU Region</b>	<b>*McEllrath</b>	<b>*Familathe</b>	<b>*Furtado</b>	<b>*Adams</b>

<b>Grand Totals</b>	<b>6,660</b>	<b>6,629</b>	<b>6,595</b>	<b>6,541</b>
---------------------	--------------	--------------	--------------	--------------

**\* Elected**

### Hawaii Members of the International Executive Board

*Aurora Raposas - Sugar	850
*Samuel Kaaihue - Longshore	905
*Douglas Cabading - Pineapple	629
Harold Gouveia - Pineapple	571
*Francis Kamakaokalani - General Trades	868
*Cyrus Kodani - Tourism	838

**\* Elected**

## Membership Services - News You Can Use

### Convention adopts policy to promote the VEBA Trust

After a lively debate, the 25th Convention adopted a resolution to support and promote the VEBA Trust for retiree medical benefits. The Trust was started by the union in 2005.

ILWU units must vote to join the program and pay the \$3 a month contribution on behalf of their members. The \$3 comes out of the unit fund. Members are also encouraged to make additional "supplemental contributions" on their own, which will increase their benefit when they retire.

Units which have not yet joined the program may still vote to join the VEBA Trust.

#### RCA-1 - Resolution to promote the VEBA Trust

Medical coverage is crucial to everyone's well-being. With insurance, health care can be affordable and accessible. Without insurance, however, a person must decide between getting needed health care and doing without, leading to potentially more serious and costly medical conditions.



**Hanalei Peters, from the Kaanapali Beach Hotel, spoke in favor of the VEBA Trust. He reminded delegates that many benefits we enjoy today come from contributions by union members in the past. Peters urged delegates to think about how the VEBA program will help their children and future union members.**

Yet for many ILWU members, medical coverage ends just when their need is the greatest. Very few ILWU members have medical coverage when they retire. Instead, they are forced to purchase medical insurance on their own or pay for all medical expenses out-of-pocket until

they become eligible for Medicare.

That is why delegates to the Local Convention in 2003 took action to establish a Voluntary Employee Beneficiary Association (VEBA) Trust when sufficient numbers of members voted to participate in the program. By 2005, after numerous meetings with members on all islands, the VEBA program was put into place and contributions to the Trust began. With these contributions, participating members are expected to receive a benefit toward payment of expenses for medical costs when they retire.

However, the amount that a member may receive when eligible is likely to be small, even with contribution investments, because the monthly contribution itself is relatively small (\$3). That is why the Local encourages members partici-

pating in the VEBA Trust to increase their monthly contributions with voluntary Supplemental Contributions.

Supplemental Contributions may be made at any time and in any amount, but the earlier the contributions are made, the greater the potential for investment earnings.

**NOW THEREFORE BE IT RESOLVED** that the 25th Convention of ILWU Local 142 encourages units to participate in the ILWU Local 142 VEBA Trust to allow unit members to benefit from post-retirement benefits; and

**BE IT FURTHER RESOLVED** that the 25th Convention of ILWU Local 142 also encourages members of participating units to consider Supplemental Contributions to increase future benefits.

### VEBA Trust Benefit Statements

If your unit voted to participate in the ILWU VEBA Trust, you should have received a "Benefit Statement" that shows how much was contributed on your behalf for 2005, 2006 and 2007.

*This is not a bill.* It shows you how much was contributed and where the gaps in contribution are. If you don't have at least \$36 credited to you each year, you may want to make a payment to bring your account up to date. Contact the plan administrator, Pacific Administrators, Inc., at 441-8600 or 1-888-520-8078 for more information.

A VEBA Handbook of Benefits is also available at each Division. Call the Division Office or your Business Agent to obtain a copy. The handbook includes forms for "Continuation of Required Contribu-

tions" if you leave your unit and for "Supplemental Contributions" to add to your account.

One member who has made Supplemental Contributions is **Eddie Sekigawa** of Island Movers. An active member of his unit, Eddie also served on the Local Executive Board. Eddie said he sent in a check for \$500 as an "investment in my future." While he has some years to go before he reaches retirement age, Eddie as a wise member is already planning for his retirement. He said, "We should all plan for our future. Saving and investing just makes sense."

If you'd like to add to your VEBA account, complete the Supplemental Contribution Form in your handbook and send in your payment. You can do this at any time.

### ILWU seated on national AFL-CIO Executive Council

ILWU International President Robert McEllrath was one of nine new vice presidents elected to 52-member AFL-CIO Executive Council. This will give the ILWU a greater voice in helping to shape our nation's labor policies at the AFL-CIO.

Delegates to the 2009 AFL-CIO Convention held this September in Pittsburgh, PA, also elected Richard Trumka as the labor federation's new president. Trumka was nominated by outgoing President John Sweeney, who praised his energy and dedication.

For the first time in history, two women were elected as executive officers of the 11.5 million member AFL-CIO. Arlene Holt Baker was elected Executive Vice President and Liz Shuler was elected Secretary-Treasurer.

UNITE-HERE also announced to the Convention they would rejoin the AFL-CIO. This should put an end to the anti-ILWU activities of the Hawaii local of Unite-HERE which competes with the ILWU in organizing hotel workers.

**The next ILWU Local 142 Executive Board meeting is scheduled for December 18, 2009, in Honolulu at the ILWU building on 451 Atkinson Drive. The meeting begins at 9:00 a.m. and will end in the afternoon. ILWU members are welcome to attend and observe the proceedings.**

August 10, 2009

#### VEBA Participant Notice

TO: All Participants of the Future Retirees Plan of the ILWU Local 142 VEBA Trust

FROM: Board of Trustees

SUBJECT: FUTURE RETIREES PLAN

#### I. SUMMARY PLAN DESCRIPTION (SPD) REVISION

##### A. YEARS OF CREDIT

The language for the "YEARS OF CREDIT" on Page 12, paragraph 1 of your SPD dated April 2007 is revised as follows:

*"You will accumulate a Year of Credit for every twelve (12) months of Required Contributions or the equivalent of twelve (12) months of Required Contributions. Your Years of Credit will be used to determine when you are eligible to receive retiree benefits under the Future Retirees Plan (see pages 12 to 14)."*

#### II. AMENDMENT TO RULES & REGULATION FOR FUTURE RETIREES PLAN

The Board of Trustees at their meeting on June 3, 2009, amended Article VI "Forfeitures" sections 6.2 and 6.3 to add language for member's "Transferring From One Unit to Another Unit". NOTE: This language will also be added to "MAINTAINING ELIGIBILITY" on Pages 8 and 9 of your SPD dated April 2007 as follows:

**Exception:** "The Member's account shall not forfeit at the end of a sixty (60) month continuous period or one-hundred twenty (120) months continuous period, whichever is applicable, when the Member transfers from one participating unit to another participating unit, due to a change in employment, as long as the Member has continued Required Contributions in the new participating unit within 30 days of Member's date of termination or transfer from the former participating unit."

Should you have any questions on any of the above changes, please contact the Trust Fund Office at 441-8600 or 1-888-256-3573.