



# VOICE OF THE ILWU

HONOLULU HAWAII  
LOCAL 142

Volume 58 • No. 5

The VOICE of the ILWU—Published by Local 142, International Longshore & Warehouse Union

September/October 2018

## Notice of ILWU Local 142 Election

This issue of the Voice of the ILWU is your official notice of the 2018 ILWU Local 142 Election. It contains the positions and candidates who will appear on the ballot and information on mail voting—including the mailing date, deadline for receipt, and who to contact if you need a ballot. This issue also contains statements and photographs submitted by candidates. **ALL VOTING WILL BE CONDUCTED BY MAIL.**

Members will also get a notice of election in the mail ballot packet you receive—however, this issue of the VOICE of the ILWU is the official notice of election. The ballot packet will be mailed out on November 12, 2018, to your last known mailing address by election services contractor Global Election Services Inc. (GES).

Ballot packets will be mailed out from Honolulu and ballots will be returned

to and counted in the county in which you live—Hawaii County, Maui County, Kauai County, and the City and County of Honolulu.

### Candidate statements

All candidates in the upcoming ILWU Local 142 election had an equal opportunity to submit a photograph and statement to be printed in this issue of the VOICE. The deadline for submission was

4:00 p.m. on September 28, 2018.

The statements were limited to 200 words and those statements longer than 200 words were cut to the last complete sentence. Otherwise, the content of the statements is printed exactly as received, with no editing for spelling, punctuation, or grammar.

All attempts were made to preserve the physical appearance of the original statements—capitalized words,

ADDRESS LABEL



### GLOBAL ELECTION SERVICES SAMPLE MAIL BALLOT INSTRUCTIONS

**BALLOTS WILL BE MAILED ON NOVEMBER 12, 2018**

ILWU Local 142 Election for Officers and Executive Board



**DEADLINE:** Your voted mailed ballot must reach Global Election Services in the enclosed business reply envelope provided **NO LATER THAN 4:00 P.M. ON DECEMBER 12, 2018.** No postage is required.

### INSTRUCTIONS

#### 1. IF YOU HAVE NOT RECEIVED A BALLOT OR NEED A DUPLICATE BALLOT:

You may make a request **starting November 20, 2018.** The **last day to make a request is December 6, 2018 at 9:00 a.m.**

• **Email Global Election Services at [helpdesk@voteges.com](mailto:helpdesk@voteges.com).**

You must provide your name, unit number, and a daytime phone number.

• **Call the following telephone number** between the hours of 6:00 am and 3:00 pm (HST), Monday through Friday:

**1-800-864-1263**

You must call personally and will receive a confirmation number for your request. You must provide your name, unit number, and a daytime phone number.

#### 2. HOW TO VOTE:

**Read this ballot carefully before marking.** Make your selection(s) by **completely filling in the circles with blue or black ink.** Pencils should NOT be used.

**Mark the circle(s) next to the name(s) of the candidate(s) of your choice.** Other marks will only be accepted if they clearly show your intended vote. **DO NOT vote for more candidates than are authorized for each office.** If you do, that ballot section only will be VOIDED.



**Make sure markings fit within the circle.**

If you make a mistake, you may use "white-out" or completely cross out the voting error, then clearly mark your corrected choice.

**DO NOT place your name, initials or any identifying mark on the ballot. Your ballot will not be counted if you can be identified.**

#### 3. HOW TO SUBMIT YOUR BALLOT:

After marking your ballot, fold and **place inside the SECRET BALLOT ENVELOPE.** Do not remove any part of the ballot. **Your vote will not be counted unless the ballot is whole as provided.**

Seal and **place the secret ballot envelope inside the BUSINESS REPLY ENVELOPE.** You must use the business reply envelope provided to cast your vote. **If you destroy your name or the barcode on the business reply envelope, your ballot will be VOIDED and not counted.**

**No one will know the identity of any voter.** No secret ballot envelopes are opened until all have been removed from the business reply envelopes and mixed together before counting.

**4. TABULATION:** All eligible ballots will be tabulated on **Thursday, December 13, 2018** at the Hilo, Wailuku, Lihue, and Honolulu Offices of the ILWU immediately following the 9:00 a.m. pick-up of the returned votes at the post office on December 13, 2018.

The election will be certified by Global Election Services, Inc.

underlining, boldfacing, and italicizing were maintained. However, all statements are printed with the same fonts and font size. Limited space required the removal of double-spacing between paragraphs.

Some candidates did not submit a statement or photo. Their names are printed, but we indicate that no photo or statement was received.

### Local Election Committee

The ILWU Local Election Committee is made up of two representatives from each Division and is responsible for statewide election administration. Current Local Election Committee members are Noelani Rasmussen and Jennifer Yadao (Secretary) from Hawaii Division, Alex Ajolo and Francis Kamakaokalani from Maui Division, Darlene Iwai and Evelyn Javillonar from Kauai Division, Eddie Sekigawa (Chair) and Carissa Schuster from Oahu Division, and Peter Morishige and Brian Nakagawa from the Hawaii Longshore Division.

**It is both your right and responsibility to elect the officers who will serve and lead ILWU Local 142.**

**Don't forget to vote for the candidates of your choice and send in your mail ballot as soon as possible after you receive it!**

# LOCAL TITLED OFFICER CANDIDATES



**Local President Candidate: DONNA DOMINGO**

Aloha Brothers and Sisters. It has been a great honor of mine to serve the membership of the ILWU Local 142 for the last 7 years as your President and in the previous 8 years as your Vice President. I have spent these last 15 years focused on growing and fighting for our membership.

We've had great successes during my tenure, in areas of Administration, Negotiations, and defense of contracts for our members, in legislative and political victories and a healthy and stable financial status. Over the next three years, I will continue to ensure our membership is represented well at the bargaining table and that our finances remain healthy and stable.

Brothers and Sisters, we are the beneficiaries of a deep and rich history founded on simple set of values, "Unity, Solidarity and Strength" I have used these values to guide every decision I've made, in contracts I've negotiated and challenges we have had to overcome. I believe in our motto, "An Injury to One is an Injury to All," and I know you do too. For these reasons and the future of our Union, I humbly ask for your vote in the coming election.

In Solidarity,  
Donna Domingo



**Local President Candidate: ALANNA MAKINANO**

Family, Chair of Alohilani Resort, Unit 4526. I was born and raised in Mililani in a difficult home. I know what it feels like to be unseen, and I promised myself I would advocate for others like me.

When I found my escape with soccer, I learned what it meant to become part of a team, and I flourished. I went to University of Texas on a soccer scholarship and graduated with a Bachelor's degree in Kinesiology/Business. I learned hard work, perseverance, and dedication.

I found family again at Pacific Beach Hotel. Our membership struggled together for ten years before we could get a contract from the employer. Between court battles and picket lines, I was inspired to become an active member of the ILWU.

Experience is how we start. Change brings new voices. Change empowers the voiceless. Change can return our union to the hands of the rank and file. One voice spoken with respect, integrity, and truth can set the tone, but a hundred voices standing strong together will create change that impacts lives for the better.

I humbly ask for your support. How can I serve you?  
AlannaMakinano@gmail.com  
www.facebook.com/alanna.makinano



**Local Vice President Candidate: CORINNA SALMO**

Aloha, I am running for the position of ILWU Local 142 Vice President. I have been a member of this great UNION for over 32 years and with that I bring experience, as a unit Officer for Unit 1401 now known as Hawaiian Macadamia Nut Services, LLC. I was entrusted by my fellow members and served as a Secretary/Treasurer/Unit Editor, worked diligently to assure our unit's financial stability, represented members by addressing/solving problems and or filing and presenting grievances. In 2000/2001 I became an Organizer for Hawaii Division working on drives within our Division and on Kauai. In 2006 I was appointed as a Temporary Business Agent for Hawaii Division and ran for a Full-Time position in 2007 and re-elected thereafter to present. Participated in Labor Institutes and Women's Conferences. I have knowledge in problem solving and handling of grievances, workers compensation claims, unemployment appeals and have been assigned to both Division and Statewide Negotiations as a Spokesperson, Adjustment Board member, Trustee /Co-Chair of the ILWU General H&W and Hawaii Division Organizing Coordinator. In closing, I truly care about the members and I humbly ask for your support and vote for Vice President, in the upcoming Local elections. "EVERYONE'S VOICE MATTERS".



**Local Vice President Candidate: CHRISTIAN WEST**

Aloha ILWU ohana! My name is Chris West and I am running for Local 142 Vice President. I have been happily married for 18 years and I am the father of two beautiful daughters. I have been a proud, dues paying member of this great union for 17 years and have served as an elected official of the Hawaii Longshore for 14 years. Eight on the Executive Board of unit 4201 and currently the past 6 as Hawaii Stevedores Vice Chairman. I was one of 7 on the 2014 state wide Longshore negotiating committee and also on the 2018 contract extension committee.

Why run for Local Vice President? One word, Solidarity! It is said, "United we stand, Divided we fall.", yet our Local has never been so divided in its history. Where once we stood together, there is now a gap between the Longshore and the rest of our 142 ohana. My wish is to bridge that gap and that is why I am running for Local 142 Vice President! TOGETHER we can accomplish great things for our rank and file. For more about myself please visit my Facebook page "Chris West for ILWU 142 Vice President" or ChrisforVP.com

## Statewide Industrial Grouping Local Executive Board Candidates



**Longshore Grouping Candidate: JESSE ANDRADE**

Aloha Brothers and Sisters, My name is Jesse Andrade. I'm a Machine Operator at Young Brothers and I've been in the industry going on 15 years. I'm currently the Chairman for Unit 4209-Young Brothers Honolulu.

I've been a Shop Steward, Secretary, and was the Co-Spokesperson in our last negotiations. I'm happily married for over 6 years to my wife Jenelle and have 2 kids, Ariana(6) and Alijah(5). My name will be on the ballot to represent the Longshore Industry on the LEB and although I'm unopposed, I'd be honored to receive your support. I'm grateful for the opportunity to expand my service to this organization and I'm committed to representing you, the members of the Hawaii Longshore Division. It's your hard work and dedication that allow for this opportunity and I thank you for that. I've come to learn over the years that the work doesn't end when you punch the clock. We must be willing to put in the extra work to maintain everything that was fought for and to achieve even more. Show up to your meetings, make your voice heard and get involved. Your support is greatly appreciated!

With Respect and Solidarity,  
Jesse Andrade



**General Trades Grouping Candidate: SIERRA DELGADO**

Aloha fellow union brothers and sisters! I, Sierra Delgado, am honored to have been nominated to the Local Executive Board representing the General Trades grouping. I've been a good standing union member for the last 15 years at Foodland

Pukalani on Maui as a cashier. I am looking forward to working alongside our Titled Officers and other board members in making decisions that will not only benefit our members but also make our union stronger! Thank you again for the nomination and I hope to serve you all to the best of my ability! God Bless you all!  
Aloha,  
Sierra Delgado  
Unit 2408-Foodland Maui

**see page 3 for complete list of Statewide Industrial Grouping Local Executive Board candidates**

# TITLED OFFICER CANDIDATES, cont.



**Local Secretary-Treasurer Candidate: BRIAN S. TANAKA**

Experience you can count on!  
Union Member 40 years  
Business Agent 24 years  
Sports Coordinator 24 years  
General Pension Plan Trustee 9 years  
VEBA Trustee 3 years  
Local Executive Board 1993-1997  
International Executive Board 1994-1997  
Local Trustee 1993-1994  
Organizing Representative 1993  
What I believe in and What I will work for.

The rank and file members should run our Union. This means our elected union leaders should take their direction from the membership and not act like bosses. As your secretary/treasurer I will listen to your concerns, will do my best to represent you and work hard to keep our Union united. We need more democracy in our Union, not less. If you don't get involved by participating in your Union programs, then you risk the chance to lose labor benefits we all enjoy today.

I want to take this opportunity to thank you, the rank and file, for the support the past 24 years. It has been a great honor to serve you as a Full-Time Officer. Again, I ask for your continued support in this up-coming election. This is your Union- a democratic union. Your voice will be heard only if you vote and get involved!



**Local Secretary-Treasurer Candidate: STEPHEN WEST**

I have been serving as your Business Agent since 2008. I humbly request your vote in this upcoming election so I may continue to serve you as your Local Secretary Treasurer.

I have been an ILWU member for over 35 years, I have worked at the Makena Beach Golf Resort & Grand Wailea Resort and Spa, I have served as a Shop-Steward, Unit-Editor, Grievance-Chair, Unit-Vice-Chair & Chair

I am dedicated to improving the quality of life and working conditions for you and the community.

I have experience in Workman's Compensation, Grievance-Handling, Organizing New Units and Union spokesman In First Contract Negotiations & Served as Chair of Maui Salary Commission, Maui Economic Opportunity, Chair Head-Start & Program Evaluation Committee & Liquor Commission.

Your values and concerns are very important to me.

As your Local Secretary Treasurer, I have been and I will be part of that leadership, bringing about Change You Want, Being a Voice For Social, Economic and Political Justice for Members, Their Families and the Community.

Together, we can preserve the jobs that we enjoy today and build a better life for

## LOCAL TITLED OFFICER CANDIDATES

**PRESIDENT**  
To be elected by a plurality of all votes cast by the entire membership of the Local. Vote for no more than one (1).

**Domingo, Donna  
Makinano, Alanna**

**VICE PRESIDENT**  
To be elected by a plurality of all votes cast by the entire membership of the Local. Vote for no more than one (1).

**Salmo, Corinna  
West, Christian**

**SECRETARY-TREASURER**  
To be elected by a plurality of all votes cast by the entire membership of the Local. Vote for no more than one (1).

**Tanaka, Brian  
West, Stephen**

tomorrow.  
Please Vote For Union Endorsed Candidates.  
With Upmost Respect, Maraming Salamat. Mahalo Nui Loa For Your Support.

The exact appearance of names in this issue of the VOICE of the ILWU may differ from the actual ballot. The names in this issue are our best interpretation of the name of the candidate, based on petitions submitted for candidates nominated by petition, or Convention credentials for candidates nominated at the Convention. Exact names will be determined by a candidate review of the sample ballot.

The next Local 142 Executive Board (LEB) meeting is scheduled to start at 9:00 a.m. on December 7, 2018, in Honolulu at the ILWU building on 451 Atkinson Drive. ILWU members are welcome to attend as observers.

## Statewide Industrial Grouping Local Executive Board Candidates, cont.



**Pineapple Grouping Candidate: RICARDO DELA TORRE**  
*no statement submitted*



**Tourism Candidate: ELIZABETH VISITACION**  
*no statement submitted*

## INDUSTRIAL GROUPING REPRESENTATIVE to the LOCAL EXECUTIVE BOARD

To be elected by a plurality of all votes cast in the **Longshore Division**. Vote for no more than one (1).  
**Andrade, Jesse**

To be elected by a plurality of all votes cast in the **General Trades Industrial Grouping**. Vote for no more than one (1).  
**Delgado, Sierra**

To be elected by a plurality of all votes cast in the **Pineapple Industrial Grouping**. Vote for no more than one (1).  
**Dela Torre, Ricardo**

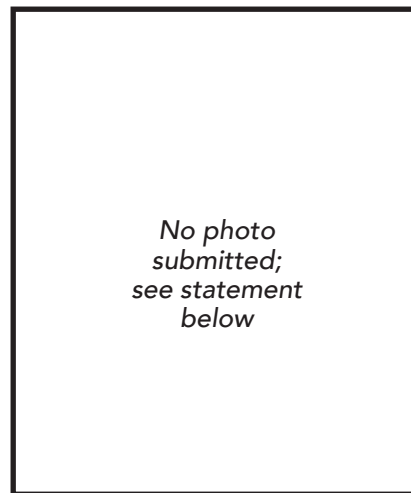
To be elected by a plurality of all votes cast in the **Tourism Industrial Grouping**. Vote for no more than one (1).  
**Visitacion, Elizabeth**

The VOICE of the ILWU (ISSN 0505-8791) is published every two months by Hawaii International Longshore & Warehouse Union, 451 Atkinson Drive, Honolulu, Hawaii 96814. Periodicals postage paid at the post office of Honolulu, Hawaii.

POSTMASTER: Send address changes to VOICE of the ILWU, c/o ILWU Local 142, 451 Atkinson Drive, Honolulu, HI 96814. Editorial Board: Donna Domingo and Guy K. Fujimura.

Editor: Mie U. Omori; mie.omori@ilwulocal142.org

# HAWAII LONGSHORE DIVISION CANDIDATES



No photo submitted; see statement below

**Longshore Division Division Director Candidate: ELGIN K. CALLES**

Im running because I feel We as a division can do better. That We as a division must do better. For our membership, our families, and most of all this great organization we love. There are so many challenges ahead of us more than ever. The only way we have a fighting chance is to first re establish True Solidarity. I believe I can make that happen. The enemy should never be from within. Ever. Thank you.



**Longshore Division Division Director Candidate: WILLIAM "BABA" HAOLE**

The Longshoreman's Bond of Solidarity To exercise the freedom my union gives me and voice my opinion. To work always watching out for each brother and sister's safety on the job. To stand on union principle and stand as One when the issue needs a decision to be made. To protect the docks from foreign ships. To resist any and all forms of union corruption. To promote freedom of belief, thought and speech among fellow Longshoremen and union brothers and sisters. To protect the collective bargaining process and exercise Robert's Rules in meetings. To Stand in Solidarity against all those who try to divide our great Union and our docks. This Bond of Solidarity is what a Longshoreman is made of. Without us there is nothing possible. It is only with our disunion that wrong is done to us. When we are hasty and distrustful and play off against each other is when no Progress is made. And the creed of Solidarity is only this:  
**That We Stand Together.**



**Longshore Division Division Director Candidate: HENRY H. KREUTZ**

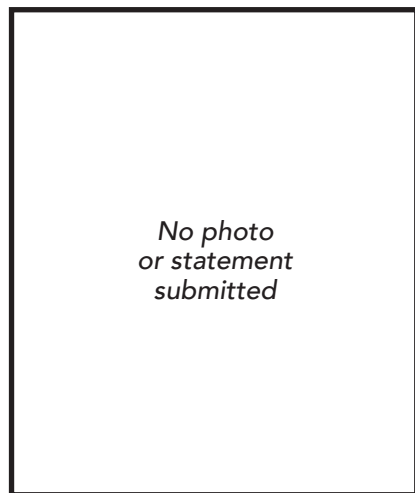
ALOHA, BROTHERS AND SISTERS, I AM RUNNING FOR THE OFFICE OF DIRECTOR OF THE HAWAII LONGSHORE DIVISION, BECAUSE I BELIEVE I REPRESENT THE LEADERSHIP TO MAKE A POSITIVE CHANGE FOR OUR MEMBERS. HAVING WORKED FOR 31 YEARS AS A LONGSHOREMAN AND CLERK, I HAVE HAD THE PRIVILEGE TO SERVE AS A UNION OFFICER FOR MOST OF THOSE YEARS.

MY CREDENTIALS INCLUDE:

- MCCABE, HAMILTON AND RENNY CHAIRMAN
- LONGSHORE OVER-ALL VICE-CHAIR
- BUSINESS AGENT
- FRATERNAL MEMBER OF THE ILWU
- INTERNATIONAL TECHNOLOGY COMMITTEE
- DELEGATE TO ILWU CONVENTIONS, HERE AND COAST

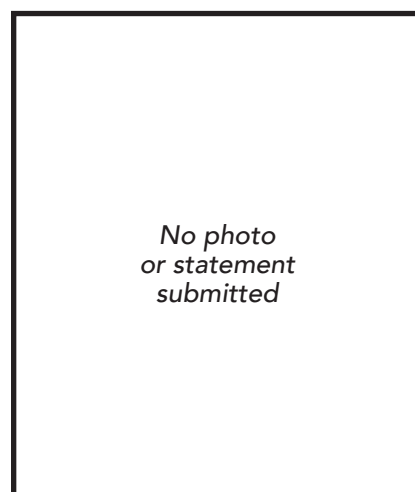
MY COMMITMENT IN THESE CAPACITIES HAS ALLOWED ME TO BUILD SOLID RELATIONSHIPS HERE AT HOME, AND UP AND DOWN THE COAST, AND HAS TAUGHT ME TO BE A LEADER THROUGH LISTENING, TEAMWORK, AND RESPECTING OTHERS.

THE LONGSHORE IS THE HEART AND SOUL OF THE ILWU, AND WE ARE FACING CHALLENGES THAT DEMAND AN EXPERIENCED, OPEN LEADERSHIP. I WANT TO REPRESENT THAT CHANGE: ONE THAT RESPONDS TO THOSE CHALLENGES, THAT UNITES OUR WORK FORCE BACK TO RESPECTABILITY, THAT CAN ONCE AGAIN THRIVE WITH COLLABERATION, AND THAT OFFERS TRANSPARENCY TO ALL MEMBERS. IF YOU BELIEVE THAT "NOW" IS THE TIME FOR CHANGE, THEN I AM YOUR MAN, AND ASK FOR YOUR SUPPORT AND VOTE. MAHALO, H



No photo or statement submitted

**Longshore Division Vice Division Director Candidate: ROBERT "BOBBY" EVANGELISTA**



No photo or statement submitted

**Longshore Division Vice Division Director Candidate: RICHARD KAMOE**



**Longshore Division Vice Division Director Candidate: DUSTIN "KAHI" RITA**

Aloha my name is Dustin (Kahi) Rita. I've been working for Young Brother's for six years. I have served two terms as an elected Unit Vice-Chairman and also participated in the most recent negotiation. I look forward to expanding my knowledge to represent our membership state-wide and be apart of our division as we move forward into the future. Mahalo for all of your support.

The exact appearance of names in this issue of the VOICE of the ILWU may differ from the actual ballot. The names in this issue are our best interpretation of the name of the candidate, based on petitions submitted for candidates nominated by petition, or Convention credentials for candidates nominated at the Convention. Exact names will be determined by a candidate review of the sample ballot.

# LONGSHORE CANDIDATES, cont.



**Longshore Division Business Agent Candidate: EDWIN "EDDIE" HAYASHI**

Aloha My name is Edwin (Eddie) Hayashi. I work as a machine operator( MO) for Mccabe Hamilton and Renny for 15 years.. Please vote for me to represent our brothers and sister of the Longshore in this next Division Elections. Thank you for your consideration! Sincerely! Edwin (eddie) Hayashi



**Longshore Division Business Agent Candidate: DAVID R. RITA**

DAVID RITA, EMPLOYEE OF MCCABE, HAMILTON & RENNY. LET'S WORK TOGETHER IN BRINGING STRENGTH AND UNITY TO OUR UNION. AS A FORMER EXECUTIVE BOARD MEMBER, I WILL AGAIN COMMIT MY UNDIVIDED ATTENTION TO OUR MEMBERS PROVIDING A VOICE, AND REPRESENTING FAIRNESS AND INTEGRITY.



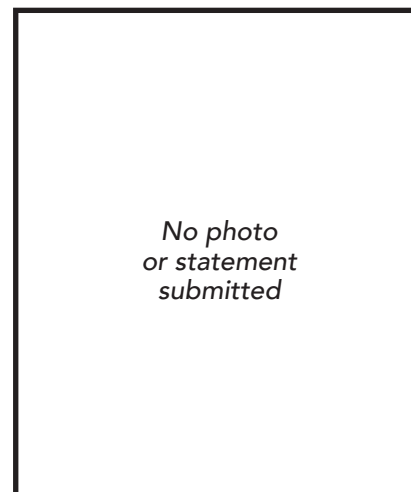
**2021 International Convention Longshore (Hawaii) Candidate: MICHAEL "MIKEY" M.K. KAPELIELA**

Aloha everyone! This is brada Mikey from the Big Island asking for your vote once again to represent Hawaii Island as your Delegate..I know what it takes to make wise decisions when called upon and I will continue to serve with Integrity and fight for your concerns and I will continue to do my very best always. Mahalo Nui.



**2021 International Convention Delegate Longshore (Maui) Candidate: MICHAEL "MIKEY" VICTORINO, JR.**

Hello my brothers and sisters, my name is Michael Victorino Jr, I am running to be a HLD Delegate for the 2021 International Convention (Maui). I have been so blessed to be a part of such a deep rooted organization, which has changed so many lives for the better. I have been a recipient of the great strides that ILWU has made. My mom Joycelyn has been an ILWU Division Clerk on Maui since February of 1988. I've been an active member since 1998, so it is safe to say that I have grown up part of the ILWU family and completely proud of it. I am so grateful to be part of ILWU – a bottom up organization that is truly owned and run by its members. We as a membership have an obligation to our forefathers, current and future members to continue to press forward and fight for good paying jobs and better working conditions. As a leader this is paramount in keeping true to our model, "An injury to one is an injury to all". In solidarity Mikey V.



No photo or statement submitted

**Longshore Division Secretary-Treasurer Candidate: DRAKE DELAFORCE**

## 2021 International Convention Delegate Candidates

### At-Large

- DENNIS MORTON**  
no photo or statement submitted
- FRED ROBINS**  
no photo or statement submitted

### Hawaii

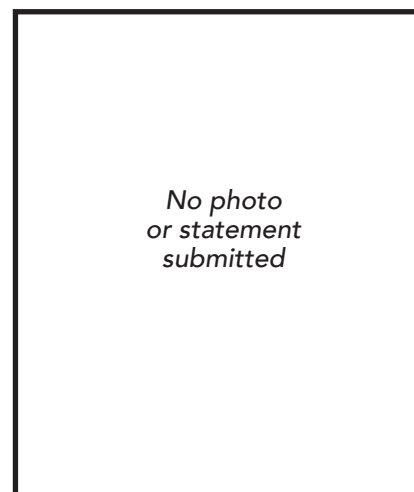
- MAKAI FREITAS**  
no photo or statement submitted
- MICHAEL "MIKEY" M.K. KAPELIELA**  
see photo and statement above

### Maui

- JENNIFER KA' AIHUE**  
no photo or statement submitted
- MICHAEL "MIKEY" VICTORINO, JR.**  
see photo and statement above

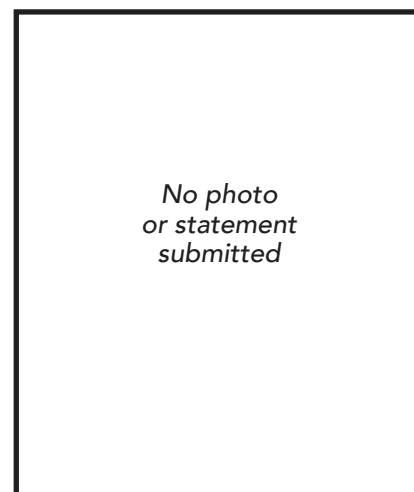
### Oahu

- RICHARD KAMOE**  
no photo or statement submitted
- BRANDON WOLFF**  
no photo or statement submitted



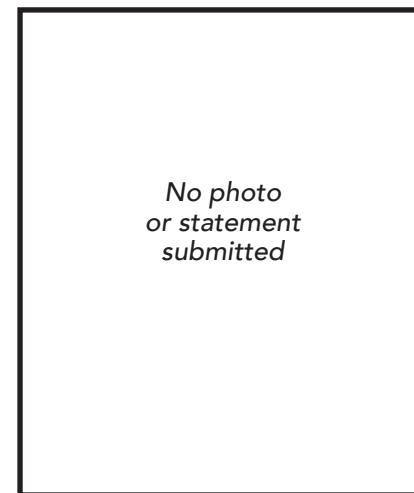
No photo or statement submitted

**Longshore Division Business Agent Candidate: DENNIS K. MORTON**



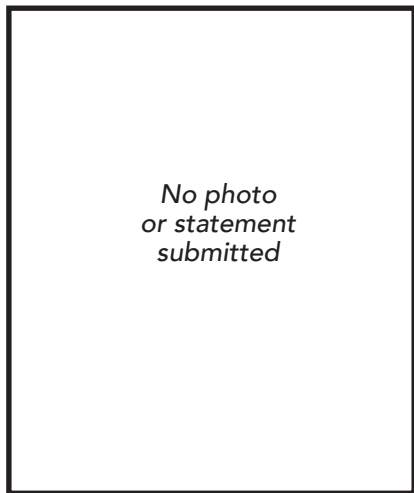
No photo or statement submitted

**Longshore Division Business Agent Candidate: FRED ROBINS**



No photo or statement submitted

**Longshore Division Business Agent Candidate: TYRONE K. TAHARA**



No photo or statement submitted

**Longshore Division Business Agent Candidate: BRANDON WOLFF**

## HAWAII LONGSHORE DIVISION CANDIDATES

### DIVISION DIRECTOR

To be elected by a plurality of all votes cast in the Hawaii Longshore Division. Vote for no more than one (1).

- Calles, Elgin K.**  
**Haole, William "Baba" Kreutz, Henry H.**

### VICE DIVISION DIRECTOR

To be elected by a plurality of all votes cast in the Hawaii Longshore Division. Vote for no more than one (1).

- Evangelista, Robert "Bobby" Kamoe, Richard Rita, Dustin "Kahi"**

### DIVISION SECRETARY-TREASURER

To be elected by a plurality of all votes cast in the Hawaii Longshore Division. Vote for no more than one (1).

- Delaforce, Drake**

### BUSINESS AGENT

To be elected by a plurality of all votes cast in the Hawaii Longshore Division. Vote for no more than two (2).

- Hayashi, Edwin "Eddie" Morton, Dennis K. Rita, David R. Robins, Fred Tahara, Tyrone K. Wolff, Brandon**

### 2021 INTERNATIONAL CONVENTION DELEGATE

**At-Large**  
To be elected by a plurality of votes by all members in the Hawaii Longshore Division. Vote for no more than one (1).

- Morton, Dennis K. Robins, Fred**

### Hawaii

To be elected by a plurality of votes by all Hawaii island members in the Hawaii Longshore Division. Vote for no more than one (1).

- Freitas, Makai Kapeliela, Michael "Mikey" M.K.**

### At-Large

To be elected by a plurality of votes by all members in the Hawaii Longshore Division. Vote for no more than one (1).

- Morton, Dennis K. Robins, Fred**

### Hawaii

To be elected by a plurality of votes by all Hawaii island members in the Hawaii Longshore Division. Vote for no more than one (1).

- Freitas, Makai Kapeliela, Michael "Mikey" M.K.**

### Maui

To be elected by a plurality of votes by all Maui county members in the Hawaii Longshore Division. Vote for no more than one (1).

- Ka'aihue, Jennifer Victorino, Michael "Mikey" Jr.**

### Oahu

To be elected by a plurality of votes by all Oahu island members in the Hawaii Longshore Division. Vote for no more than one (1).

- Kamoe, Richard Wolff, Brandon**

# HAWAII DIVISION CANDIDATES



**Hawaii Division Director Candidate: ELMER C. GOROSPE, SR.**

Aloha Brothers & Sisters! My name is Elmer C. Gorospe, Sr., the Hawaii Division Director. Let me begin by expressing my heartfelt "MAHALO!" to the Unit Officers, Shop Stewards and, most importantly, the Members for volunteering your time/energies in serving your respective Unit membership to make this a great labor organization!

I have been a rank-and-file member. Since 1994, I was active as Shop Steward and Unit Treasurer until elected as a Business Agent in 2004 then as D.D. since 2012. As a Full-Time Officer, I served as an International Convention delegate; Judicial Panel Chairman; members of the International Executive Board, Local Executive Board, Local Executive Committee, and Adjustment Board; Trustee of ILWU Hotel Pension Trust and Health & Welfare; Chair of the Constitution Committee (Local Convention), Contract Negotiation Spokesperson (General Trades and Hotel), experienced in Workers' Compensation/Unemployment hearings.

My vision for the future: bring more transparency, continued education for the membership, continue to fight for the rights of the membership, and to once again be an organizing Union.

I am running once again for Division Director; I humbly ask for your continued confidence and support in the upcoming ILWU Local 142 elections.

Mahalo!



**Division Trustee Candidate: LLOYD N. MATSUBARA**

ALOHA UNION BROTHER AND SISTER,

As a member of ILWU LOCAL 142. Lloyd Matsubara has a long standing with the Union, I am seeking the office of Hawaii Division Trustee, I have being a Trustee for 6 years already, and I think my work needs to be carried on. I started



**Hawaii Division Business Agent Candidate: MICHAEL DELA CRUZ**

Aloha and Mabuhay!

Brothers and Sister of ILWU Local 142, I am Michael Dela Cruz from Unit 1517 Hilton Waikoloa Village. I've been a dues paying member for the last 15 years, with 10 years spent working in the tourism industry. 5 years ago I began serving as a full time Business Agent. I have sat through many negotiations from tourism to general trades. Learned many different challenges that we all face in various units throughout the collective bargaining agreement, along with resolving many grievances successfully and I will continue to do so as best as I can. I also represent the ILWU pensioner retirees throughout Hawaii Island.

I promise to continue to represent our members and retirees of this great Union to the best of my ability. I humbly ask for your vote and support, along with my colleagues who share the same desires for this Union. Leaders and future leaders seeking your vote in this upcoming election: for Vice President: Corinna Salmo-Nyugen, Division Director Elmer Gorospe, Business Agents: George Martin, Michael Dela Cruz, Tristie Licoan and Rose Molina. We will lead our members and future retirees to a better tomorrow. Mahalo and Salamat

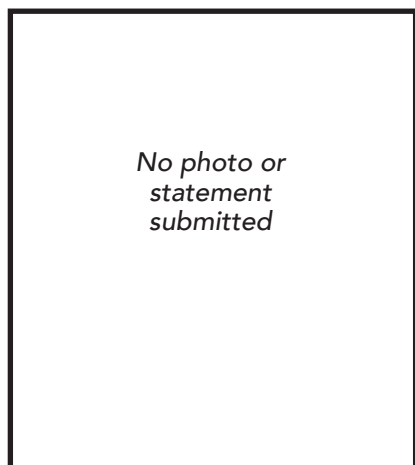
getting involved in the union while working at Volcano Golf Course for 5 years. Then 5 year with Hyatt Waikoloa, than with 25 years of service with Hilton Waikoloa Village. I have served as shop steward, long time treasure, than 1st vice, was a board member of Big island Foundation, that watch over all aspect of the union housing for the Big island. My duties as a Division trustee is examine the books and finance of the Local; we have the authority to recommend the denial of payment of expenditure in excess of the budgeted amount, to approval of the quarterly financial statement. This position has so many aspect of what the local spending and checking on the each unit budget, so to make sure there don't spend more than they can afford.

see page 5 for complete list of Hawaii Division candidates



**Hawaii Division Business Agent Candidate: TRISTIE K. LICOAN**

Aloha Union Ohana, Hawaii Division Business Agent Candidate, Tristie K. Licoan. Division committee responsibilities: Unit Bulletin Coordinator, Political Action Co-chair West Hawaii, Sports Coordinator, and board member of South Kohala Community Development Planning Action Committee. Experiences: Mauna Kea Beach Hotel employee 2002-present, Shop Steward Culinary department 2009-2017, elected Unit Vice-Chairman 2010-2014, elected Unit Chairman 2015-2017. Local, International Convention Delegate 2012-2015, Business Agent Shadow Program 2015-2016, appointed January 2017. Hotel negotiations committee 2012, 2015, Chair of numerous General Trades negotiations 2016-present. Summer Institute for Union Women attendee in Canada, Washington, Hawaii and California, Labor Institute 2018, with emphasis on organizing and how to make the union strong in the workplace. As a descendant of Hamakua Sugar Plantation and O'okala Mill roots, I've understood the trials of organized labor, the importance of solidarity and preserving the economic betterment and lifestyles for "All" rank-and-file members, past, present and future. I'm dedicated to strengthening our units and educating our members of our Union's purpose and perpetuate the history of our fight! "An Injury To One, Is An Injury To All." I humbly ask for your support for "All" Hawaii Division Candidates, including Corinna Salmo Nguyen, Candidate for Local 142 Vice-President, Mahalo!



**Division Trustee Candidate: CLYDE KIHARA**



**Hawaii Division Business Agent Candidate: GEORGE A. MARTIN**

Aloha Brothers & Sisters, I'm running for Business Agent (BA) Hawaii Division. Mahalo for your continued support over the last twelve years. I need ALL of you to HELP get the Hawaii Division Team elected by voting for:

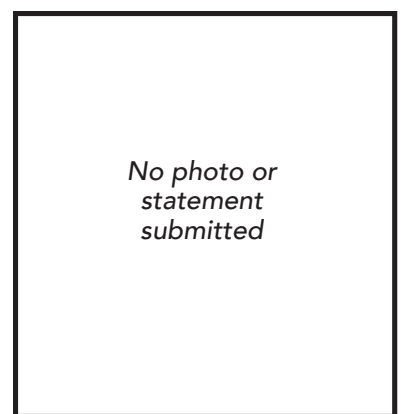
Elmer Gorospe Division Director  
Michael Dela Cruz Business Agent  
Tristie Licoan Business Agent  
Rose Molina Business Agent  
George Martin Business Agent  
And most important, I humbly ask ALL members of Local 142 to vote for Corinna Salmo for Vice President. Our Local needs her 35+ years of experience as rank and filer, and Full time Officer!! She will bring the experience of not only one industry, but multiple industries! Please continue to vote for, "OUR", President, Donna Domingo. The ballots will be mailed out on November 12, 2018 and need to be mailed back in no later than December 7, 2018 to be counted on December 12, 2018. Mahalo again for your support!

### 2021 International Convention Delegate Candidates

**At-Large**  
**CLYDE KIHARA**  
no photo or statement submitted  
**ROLAND "JELLY" SHIMAOKA, JR.**  
no photo or statement submitted

**General Trades**  
No candidate

**Tourism**  
No candidate



**Local Executive Board Division Representative Candidate: ROLAND "JELLY" SHIMAOKA, JR.**

## Hawaii Candidates, cont.



**Hawaii Division Business Agent Candidate: ROSELYN MOLINA**

As a second generation ILWU member, I began working in Front Office at Keauhou Beach Resort-1998 and served as Steward and Unit/Negotiating Chair until the closure of the hotel-2012. During the effects bargaining, we successfully negotiated for extended benefits including medical coverage for affected employees after the closure. I currently serve as Chair for Unit-1520 Sheraton Kona Resort and helped to organize and mobilize the Front Office to join the Union. As Chairman for over 15 years, I've experienced different types of situations and challenges that helped me to grow and learn along the way. The Union has made a positive impact in my life and helped me to raise my Family to have better opportunities and a brighter future. Now that my three daughters are all in college, I feel that I am ready to take the next step and stand up to fight for the rights of our everyday rank and file, and to protect workers rights and job security as the Union did for my Family. I humbly ask for your support for myself and the rest of Hawaii Division Team- Elmer, George, Michael, Tristie and by voting- Corinna Salmo-Nguyen for Local Vice-President. Mahalo! Salamat!

### HAWAII DIVISION CANDIDATES

**DIVISION DIRECTOR**  
To be elected by a plurality of all votes cast in Hawaii Division. Vote for no more than one (1).  
**Gorospe Sr., Elmer "ECG"**

**DIVISION TRUSTEE**  
To be elected by a plurality of all votes cast in Hawaii Division. Vote for no more than one (1).  
**Kihara, Clyde F. Matsubara, Lloyd N.**

**DIVISION LOCAL EXECUTIVE BOARD**  
To be elected by a plurality of all votes cast in Hawaii Division. Vote for no more than one (1).  
**Shimaoka Jr., Roland "Jelly"**

**BUSINESS AGENT-AT-LARGE**  
To be elected by a plurality of all votes cast in Hawaii Division. Vote for no more than five (5).  
**Dela Cruz, Michael Licoan, Tristie Martin, George A. Molina, Roselyn**

**2021 INTERNATIONAL CONVENTION DELEGATE At-Large**  
To be elected by a plurality of votes by all members in Hawaii Division. Vote for no more than two (2).  
**Kihara, Clyde F. Shimaoka Jr., Roland "Jelly"**

# KAUAI DIVISION CANDIDATES



**Kauai Division Director Candidate: PAMELA GREEN**

Aloha Brothers and Sisters, The last few years we have experienced a confirmation of the power of anti-union organizations with sneaky names like "Freedom Foundation" that are funded by wealthy right wing individuals like the billionaire brothers Charles and David Koch.

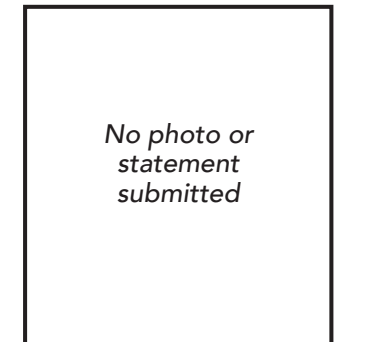
Unions need to prepare for battle; we will need to fight for our future existence. 8 hour work days, 40 hour work weeks, meal periods, overtime pay, call-back premiums, medical and dental, sick leave & pension are a few of the benefits we and those before us fought to secure in our existing Collective Bargaining Agreements.

If it matters to you who will lead our Union for the next three years, please open your mail-out ballot, vote for the candidate of your choice and mail your ballot back.

I am very grateful for the privilege of serving our membership; I hope you will allow me to continue to serve you.

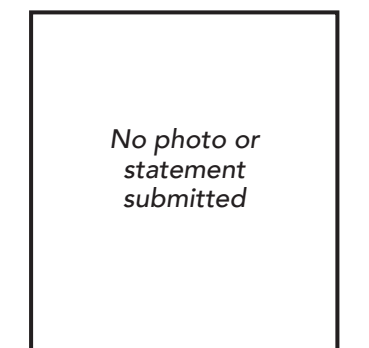
I would like to close with a quote from Martin Luther King:

"Our lives begin to end the day we become silent about the things that matter." In Solidarity, Pamela



No photo or statement submitted

**Division Trustee Candidate: BRYON F. PONTE**



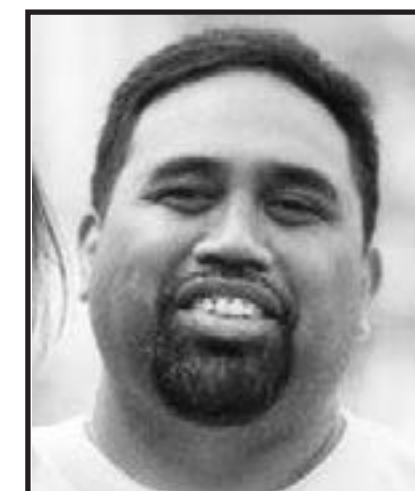
No photo or statement submitted

**Kauai Division Business Agent Candidate: CALVIN CORPUZ**



**Local Division Executive Board Representative Candidate: TRUDY AZEKA**

Aloha! My name is Trudy Azeka and I'm running for the Local Executive Board seat for Kaua'i. I humbly ask for your vote and would be honored to continue representing our Kaua'i Division! I've been a member, shop steward, Secretary/Treasurer for quite a few years and I'm so proud to be involved in the best union! ILWU Local 142



**Kauai Division Business Agent Candidate: HOKU KEAMOAI**

Aloha ILWU Local 142 Members, My name is Hoku Keamoai and I seek the position of Business Agent in this upcoming election for 2019-2021.

It is with great humility that I ask you to consider two key points, AWARENESS and ACCOUNTABILITY I believe that the Union will need to complete its mission in the next three years.

1. To be more AWARE of Industry happenings, please read and study Union literature when it comes to your mailbox. AWARENESS brings consciousness and in this Corporate World we work in, we need it more than ever.

2. The Union is NOT only made up of the Division Director, Business Agents and Union Stewards. It is made up of ALL ILWU Local 142 Members collectively. Be ACCOUNTABLE and take ownership when speaking of the Union. When the Union is strong, we are strong and when it is weak, we are weak. Likewise, when the Union goes above and beyond, we are engaged and when the Union does nothing, we are complacent. Vote in people you believe in and hold them ACCOUNTABLE to their principles. Without ACCOUNTABILITY, there is no change.

Me ke aloha, Hoku Keamoai

### KAUAI DIVISION CANDIDATES

**DIVISION DIRECTOR**  
To be elected by a plurality of all votes cast in Kauai Division. Vote for no more than one (1).  
**Green, Pamela**

**DIVISION TRUSTEE**  
To be elected by a plurality of all votes cast in Kauai Division. Vote for no more than one (1).  
**Ponte, Bryon F.**

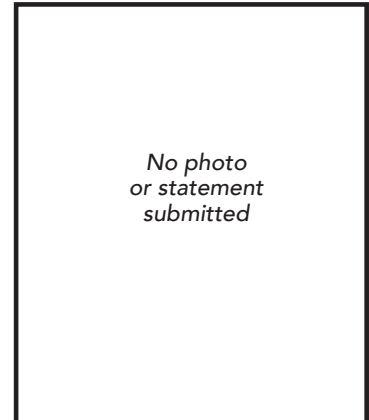
**DIVISION LOCAL EXECUTIVE BOARD**  
To be elected by a plurality of all votes cast in Kauai Division. Vote for no more than one (1).  
**Azeka, Trudy**

**BUSINESS AGENT-AT-LARGE**  
To be elected by a plurality of all votes cast in Kauai Division. Vote for no more than two (2).  
**Corpuz, Calvin Keamoai, Hoku Pacheco, Chad**

**2021 INTERNATIONAL CONVENTION DELEGATE At-Large**  
To be elected by a plurality of votes by all members in Kauai Division. Vote for no more than one (1).  
**No candidate**

**General Trades**  
To be elected by a plurality of votes by all members in Kauai Division. Vote for no more than one (1).  
**No candidate**

**Tourism**  
To be elected by a plurality of votes by all members in Kauai Division. Vote for no more than one (1).  
**Trudy Azeka**



**Kauai Division Business Agent Candidate: CHAD K. PACHECO**

### 2021 International Convention Delegate Candidates

**At-Large**  
No candidate

**General Trades**  
No candidate

**Tourism**  
Trudy Azeka see photo above

The exact appearance of names in this issue of the VOICE of the ILWU may differ from the actual ballot. The names in this issue are our best interpretation of the name of the candidate, based on petitions submitted for candidates nominated by petition, or Convention credentials for candidates nominated at the Convention. Exact names will be determined by a candidate review of the sample ballot.

# MAUI DIVISION CANDIDATES



**Maui Division Director Candidate:**  
**ROBERTO "BOBBY" ANDRION, JR.**

Brothers and Sisters,  
Every year we are faced with difficult challenges which threaten our family's future. Issues of economic uncertainties, to government leadership that does not care for the working class and anti-union organizations like "Right to Work" are some of those hurdles that we as a union must overcome. These organizations would weaken our foundation that would unravel the very fabric that protects our existence. If left unchallenged or unchecked we will be on a path of total destruction, where no voice will ever be heard, and no injury will be ever be noticed.

We as members must never forget the struggles of our ancestors that paved the road, so that our families can enjoy a promising life. The benefits of having a union contract far out measure those without one. Brothers and Sisters, I am running for the position of Maui Division Director to continue this promise of fighting and protecting our future against any organizations that will stop at nothing to lower our standards of living.

If I could be so bold to ask for your vote and support this coming Union election, it would be greatly appreciated.

Sincerely,  
Roberto "Bobby" Andrion Jr.



**Maui Division Business Agent Candidate:**  
**CHARLES ANDRION**

Brothers and Sisters of ILWU Local 142, I am asking for your support and privilege this coming election to run as Business Agent for Maui Division.

I am currently a Union Steward at the Grand Wailea unit 2520. I understand the importance of our union and the struggles that the previous generations have fought and worked hard for. However, we the younger generations should not take for granted, what we have as benefits must be protected. Today is not the time to be intimidated or to be silenced and allowed for things to pass by, while government officials and companies are ready and willing to take everything that we as a great union fought and worked for. We must come together as ONE to make a stand for our younger generations to be proud of. If not, we as a union will just be a memory.

I humbly ask for your support in allowing me the opportunity to defend workers rights and to bridge the generational gap. Thank you for your support and taking the time to ready my statement.

Mahalo,  
Charles Andrion



**Maui Division Business Agent Candidate:**  
**JOSEPH "JOE" AQUINO**

Aloha,  
Brothers and Sisters of the ILWU Local 142, my name is Joseph Aquino and I'm running for re-election of Business Agent, Maui Division. Thank you for your support in electing me the last term and I ask for your continued support again. Last election my theme was, "help me to help you." It was a challenging period with the closure of HC&S but we managed to survive because of the union's contract in place. In the last three years I've not only represented you, I've placed myself in positions that would benefit the union. I'm on the Board of Water Supply, MEO Board of Directors, Precinct President and Sports Coordinator. Although we didn't always win, I can honestly say that we still came out on top for the fight of fair treatment, competitive wages and sustained benefits.

This term, let's continue the battle for your rights and also educate ourselves of what is to come. Many don't realize the resistance out there that are trying to break the unions apart and get rid of us completely. We must start banding together before it's too late. Again, please support me to represent you and move to stand as one.

Mahalo



**Maui Division Business Agent Candidate:**  
**EMMANUEL "MANNY" BALTAZAR**

Dear Brothers and Sisters,  
We must ALL prepare and work TOGETHER to unified and strengthen our UNION, to protect our jobs, to get the BEST contracts and join hand in hand for brighter and blissful FUTURE!!!!

I'm so much grateful and humbly honored for all the amazing opportunities provided to me by ILWU. It's has been a privilege serving as Political Action Committee Chairman and Temporary Business Agent since January, 2016. I thank UNIT 2520 - Grand Wailea Resort & Spa serving/representing our membership as Steward, Grievance Chairman, Chairman, Contract Negotiating Member/Chairman, delegate International/Local Conventions and attendee in Training Workshops/Conferences.

I served various capacities in different organizations in the community and church sharing unconditional contributions of my TIME, TALENT and TREASURE including my family that makes me credible, trusted and outstanding LEADER.

I am confident, personally motivated and firmly believe that I am ready to a higher level of service considering my various leadership roles have equipped and prepared me for the job of DIVISION BUSINESS AGENT. I really possess the right management/supervisory skills, relevant knowledge/ideas, rich experiences/trainings for this important position.

My brothers and sisters, I humbly ask for your SUPPORT.....VOTE for me as DIVISION BUSINESS AGENT.

# MAUI CANDIDATES, cont.



**Maui Division Business Agent Candidate:**  
**JERRYBETH "JB" DE MELLO**

Times are changing as we face uncertainty, look at Hurricane Lane, placing a stamp into our path shutting down West Side on Maui, hundreds of acres in brush fires destroyed horse stables, leaving families houseless. All the more difficulty in losing our brothers and sisters in different industries with foreclosures, operations shut-down as they went through a difficult transition from their life long time of employment and worried what to do to survive and protect their family's benefits. Struggling with them helping to get resources for job placements in our other companies, assisted families with outreach programs besides handling my assigned position as your ILWU Business Agent for over 26 plus years and as union member for more than 47 years.

I live in Lahaina, currently assigned to Montage Resort, Kapalua, Times Supermarkets (Honokowai & Kihei), 8-Foodland properties including Sack & Save and Kehalani Gas/Go station (from Lahaina, Kihei, Wailuku, Kahului to Pukalani), also Ka'anapali Beach Hotel, Maui Eldorado AOA, Ka'anapali Golf Properties LLC, Ka'anapali Operation Association, besides serving as a member of Maui County Liquor Adjudication Commission, Voluntary Employees' Beneficiary Association (VEBA) Trustee/Secretary, Unit Editorial Program Coordinator and Maui ILWU Pensioner's Club Coordinator.



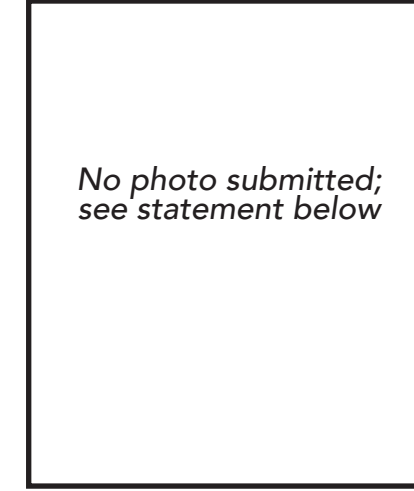
**Maui Division Business Agent Candidate:**  
**TEDDY "BEAR" ESPELETA**

Hello everyone my name is Teddy B. Espeleta.

I am running for the office of Maui Division Business agent. I have been a Full Time Officer for over fifteen (15) years in different capacities and ILWU member for about forty (40) years. In the years that I have been an officer with the ILWU Local 142 I have negotiated and been involved in numerous contract negotiations, grievance handling and worked with numerous Units to help improve their work sites. I have also served on Both the ILWU International and Local 142 executive Boards.

I am running for the position of business agent because I want to continue to serve and represent the members of ILWU Local 142 and continue to educate our current members and future members the importance of belonging to a Union most especially the ILWU.

I humbly ask you all for your support. Thank you.  
Teddy B. Espeleta (Bear)



No photo submitted; see statement below

**Maui Division Business Agent Candidate:**  
**CYRUS KODANI**

Aloha,  
My name is Cyrus Kodani and I am running for Business Agent-Maui Division. I currently am employed at the Hyatt Regency Maui and have been since June of 1980 as a Banquet Porter.

During that time I have held numerous positions within the Bargaining Unit such as; Union Steward, Unit Chair, LEB, (Local Executive Board), IEB (International Executive Board), was involved with the last three Contract Negotiations. I also spent time as a BA (Business Agent) from 2012 - 2015 and an Temporary BA 2011.

I know what it takes to get the job done. I would like to once again be of service to the members of this Union.

I humbly ask for your support during this coming election.  
Mahalo and God Bless,  
Cyrus Kodani



**Maui Division Business Agent Candidate:**  
**STEVEN J. LEE**

Aloha fellow union brothers and sisters! My name is Steven Lee, currently a Business Agent for the Maui Division. I would be honored to continue representing members of ILWU Local 142 for the next 3 years.

I immigrated to the United States from South Korea as a child with my family. We settled in Chicago where I grew up. My wife and I have a son who is a senior at Maui High School.

We moved to Maui 13 years ago. I secured employment as an Engineer at the Hyatt Regency Maui Resort and Spa. The leap to Business Agent was considerable for my family. I am so grateful for their unwavering support.

We live in a time of tremendous political uncertainty and dissension. Threats to unions and the rights of working men and women are ever present. I am passionate about our union and how it seeks to always protect the rights of workers.

I would appreciate your support and vote so I may continue working for members of ILWU Local 142 Maui Division. Mahalo!

more Maui Division candidates on pages 9, 10, and 11...

see page 11 for complete list of Maui Division candidates

The exact appearance of names in this issue of the VOICE of the ILWU may differ from the actual ballot. The names in this issue are our best interpretation of the name of the candidate, based on petitions submitted for candidates nominated by petition, or Convention credentials for candidates nominated at the Convention. Exact names will be determined by a candidate review of the sample ballot.

# MAUI CANDIDATES, cont.



**Local Executive Board Division Representative Candidate:**  
**CHRISTOPHER N. BARUT**

Aloha, Brothers & Sisters. My name is Christopher N. Barut. I have been a member for the past 18 years and currently the Grievance Chair & Editor for Unit 2520, Grand Wailea Resort. I am also currently the Vice Chair for the Unit Negotiations Committee.

I started off my involvement as a steward and worked my way up to becoming an officer for our unit. I have attended the 9th ILWU Local 142 Labor Institute, as well as, several Local & International Conventions with the opportunity of being elected as a delegate to represent Maui Division for Tourism to the 37th ILWU International Convention. I also had the opportunity to serve as an appointed Maui Division Captain at the 28th ILWU Local 142 Convention. I am currently the Democratic Party Precinct (9-1) President and involved with many Political Action activities from opening day at Hawaii State Legislation to Democratic Party State Convention.

I humbly ask for your support in the ILWU Local 142 elections for the position of Maui Division Local Executive Board Member. I look forward to gaining more knowledge with more education and involvement in our Great Union.

Mahalo,  
Christopher

**2021 International Convention At-Large Candidate:**  
**HENRY OANDASAN**

I'm HENRY C. OANDASAN, member of ILWU Local 142 since 1986. I enjoyed myself joining actively and participating union activities and programs for more than 36 years. I have been elected as delegate and observer in International and Local conventions. I am the 1st Vice-Chairman of UNIT 2520 – Grand Wailea Resort & Spa and member of the Contract Negotiating Team since 1991. I attended trainings like Labor Institute, Advanced Stewardship and participated in Political Action Committee Activities and Democratic Party Conventions/ meetings to enhance myself to gain more knowledge, ideas and skills to serve our unit effectively. I experienced also testifying at the County Chamber to support issues related to working families, tourism, housing for the betterment of the community.

My ancestors has interconnection to labor unions since pineapple and sugarcane plantation days and my parents work also in tourism industry.

I also work at Mauna Lani Bay Hotel and Hyatt Regency Waikoloa while I helped to organize to be union house.

I ask you to VOTE for me as DELEGATE at LARGE for the 38th International Convention in 2021. I will be your VOICE my brothers and sisters to represent you. Thank you for your support.

**2021 International Convention At-Large Candidate:**  
**LOURDES R. RIVERA**

Aloha, I'm Lourdes R. Rivera from Unit 2505, currently the Unit Treasurer and a member of the Negotiating Committee from 2004 to present. I am grateful and proud to be an ILWU member for 28 years. My knowledge and education extend out to the Labor Institute, Local Seminars and Trainings. I was fortunate to be a delegate to the 25th Annual Western Regional Summer Institute for Union Women which expanded my vision and love for this Union. My activeness in Political Action on Maui has led me to serve as a Deputy Voter Registrar in 2004. Thus; opening the door to be a delegate at the Hawaii Democratic Party Caucus.

I truly believe organizing is our lifeline to survive in this Union, without it we will perish. My experience with organizing started from 2006 to present. Helping everyone is my passion.

Running as a candidate for the position of At-Large Delegate for the 2021 International Convention, I realize full and well, the enormous responsibilities and importance of this position. It would give me great honor to humbly ask for your vote and support so that I could serve you in a higher capacity. Mahalo.

**2021 International Convention Tourism Candidate:**  
**ORLANDO DE LEON**

My brothers and sisters of ILWU-Maui Division, my name is **ORLANDO C. DE LEON** representing Maui Eldorado AAO originally from Castillejos, Zambales, Philippines. I have been a very active and dedicated member of the union for 27 years as steward for 9 years and unit chairman for 18 years, happily married to Maria Theresa de Leon, also a union member from Hyatt Regency Resort for 30 years. My family knows the important role of union in our lives... having better benefits and job security, that's the reason my involvement is beyond compare and immeasurable.

I attended various international and local conventions, steward trainings, labor institute and workshops to learn more knowledge, ideas and skills to serve my members and unit in the best way. I'm actively involved, diligent member/precinct officer of State of Hawaii Democratic Party and I always attended conventions and various meetings. I firmly believe that UNION will be STRONG and UNIFIED if Political Action Committee is well established/organized that's why I'm giving 100 percent of my support in all activities/programs in our division.

I sincerely ASK for your **SUPPORT** and **VOTE** for me as **DELEGATE** for **TOURISM** for the 38th International Convention in 2021.

# MAUI CANDIDATES, cont.



**2021 International Convention Pineapple Candidate:**  
**RICARDO DELA TORRE**

**Division Trustee Candidate:**  
**KENNETH HUNT**

Aloha!  
My name is Kenneth Hunt. I have been a proud member of ILWU Local 142 for the past 14 years

It has been my pleasure to serve as secretary-treasurer for Unit 2520 (Grand Wailea Resort) since 2014.

I have been given the honor to have been elected as chairman of our 2018 contract negotiating committee representing our over 1100 members.

As a delegate and observer to the 2015 & 2018 Local and International conventions I have been afforded the opportunity to better understand the past successes and future challenges of Local 142.

I respectfully ask for your support in the upcoming election as a Division Trustee. Mahalo!

## MAUI DIVISION CANDIDATES

**DIVISION DIRECTOR**  
To be elected by a plurality of all votes cast in Maui Division. Vote for no more than one (1).  
**Andrion, Roberto "Bobby"**

**DIVISION TRUSTEE**  
To be elected by a plurality of all votes cast in Maui Division. Vote for no more than one (1).  
**Hunt, Kenneth**

**DIVISION LOCAL EXECUTIVE BOARD**  
To be elected by a plurality of all votes cast in Maui Division. Vote for no more than one (1).  
**Barut, Christopher N.**

**BUSINESS AGENT-AT-LARGE**  
To be elected by a plurality of all votes cast in Maui Division. Vote for no more than five (5).

**Andrion, Charles**  
**Aquino, Joseph**  
**Baltazar, Emmanuel "Manny"**  
**De Mello, Jerrybeth "JB"**  
**Espeleta, Teddy "Bear"**  
**Kodani, Cyrus**  
**Lee, Steven J.**

**2021 INTERNATIONAL CONVENTION DELEGATE At-Large**  
To be elected by a plurality of all votes cast in Maui Division. Vote for no more than one (2).  
**Oandasan, Henry**  
**Rivera, Lourdes R.**

**Pineapple**  
To be elected by a plurality of all votes cast in Maui Division. Vote for no more than one (1).  
**Dela Torre, Ricardo**

**General Trades**  
To be elected by a plurality of all votes cast in Maui Division. Vote for no more than one (1).  
**No candidate**

**Tourism**  
To be elected by a plurality of all votes cast in Maui Division. Vote for no more than one (1).  
**De Leon, Orlando**



### 2021 International Convention Delegate Candidates

**At-Large**  
**HENRY OANDASAN**

see statement and photo on page 10

**LOURDES R. RIVERA**

see statement and photo on page 10

**General Trades**  
No candidate

**Pineapple**  
**RICARDO DELA TORRE**

No photo or statement submitted

**Tourism**  
**ORLANDO DE LEON**

see statement and photo on page 10



**see page 11 for complete list of Maui Division candidates**

The exact appearance of names in this issue of the VOICE of the ILWU may differ from the actual ballot. The names in this issue are our best interpretation of the name of the candidate, based on petitions submitted for candidates nominated by petition, or Convention credentials for candidates nominated at the Convention. Exact names will be determined by a candidate review of the sample ballot.

# OAHU DIVISION CANDIDATES



**Oahu Division Director Candidate:**  
**MICHAEL S. YAMAGUCHI**

Let me first begin by thanking you for your continued support. It is an honor to serve you as Oahu Division Director. Like me, I know you believe that the rank and file is the bloodline of the ILWU. I became a rank and file member at the Hawaii Newspaper Agency in 1996, and served as Shop Steward, Unit Secretary, Unit Editor, Business Agent, Local Representative and Division Director for the past 6 years.

As your Division Director, I will continue to lead us forward, stronger and more unified. With education, transparency and teamwork, I will continue to build the Oahu Division to protect your rights.

As work environments evolve, we must be respected by employers and successfully negotiate with them, always being mindful of our member's issues. I have established constructive relationships with employers, which has led to the negotiation of favorable contracts and positive outcomes for displaced members from multiple Companies.

My experiences being involved on various City Commissions further enhances my leadership skills, which I will utilize in moving the ILWU forward.

I humbly ask you again to support me, Mike Yamaguchi, for Oahu Division Director. Together, we will continue to grow ILWU's proud legacy.

Mahalo



**Oahu Division Business Agent Candidate:**  
**WILFRED CHANG, JR.**

The motto of the Ilwu is "an injury to one, is an injury to all". To understand the meaning, is to look into oneself. Could I have done more? Did I do enough? What am I willing to do?

I believe wholeheartedly that to be effective, a certain level of sacrifice and service along with a caring attitude are prerequisites.

By no means am I perfect, there are times when I struggle, sometimes I may not understand a members outlook on a certain situation.

However, I have proven to be a hard worker, a good listener, fair, and innate ability to resolve conflict.

I humbly ask your support.  
Mahalo Nui Loa,  
Wilfred A Chang Jr.



**Oahu Division Business Agent Candidate:**  
**PARIS FERNANDEZ**

I'M A UNION WORKER.

That means I'm part of an organization that fights not only for my benefit, but for everyone's.

Union presence in an area puts pressure on employers to give better pay and benefits to their workers, in order to stay competitive. Unions are one of the only forces capable of effectively resisting the continual downward push on employee compensation.

Consumer spending is what creates jobs and prosperity. Increased employee compensation leads to more consumer spending; it pumps more fuel into the engine that drives the whole economy.

That is what myself and unions are fighting for.

That is what I am supporting by working in a union.

In other words...

I'm Paris Fernandez and I humbly ask for your re-election vote for Oahu Division Business Agent.



**Oahu Division Business Agent Candidate:**  
**DILLON M. HULLINGER**

My name is Dillon Hullinger and I am running for re-election as a Business Agent for the Oahu Division. I have been an ILWU member for 29 year's; during that time I served the Foodland unit as a steward, a unit vice chair, and unit Chair. For the past 8 years I have served as a business agent representing numerous different units and members.

During these 8 years as a business agent I have learned numerous new strategies in regards to negotiations, contract enforcement, grievance handling, and membership servicing. I have represented a vast array of units and this has helped me to learn how to solve problems, issues, and concerns for the members that greatly differ from one unit to another.

I believe it is important to educate and increase involvement of our young members and future leaders of the union. One of the best ways to do that is to share your experiences and knowledge with them. This allows them to take control and solve things at their unit and work site.

I humbly ask for your support to allow me to continue to service your units and represent the membership of Oahu Division as a Business Agent.



**2021 Convention Delegate Candidate (General Trades):**  
**CORIN KEKUA**

Aloha! My name is Corin Kekua. I've been a member of the union for 17 years, I've also been a steward and an officer for my unit for the past 2 years.

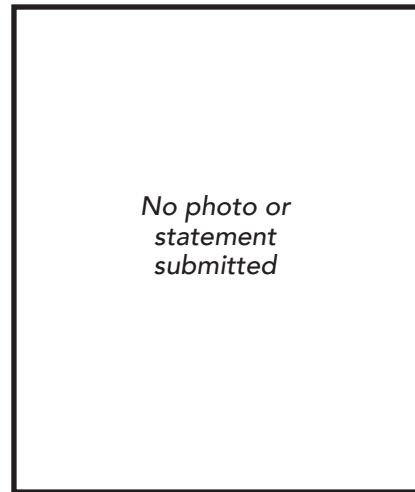
Within the past 2 years I've represented my unit in the Summer Institute for Union Women, the labor institute, and the 28th local convention, that took place this past September. During those times I have learned so much about the union and how it benefits all of us and our families, and

have grown to be a strong supporter of the union.

I am running to represent general trades, as a delegate in the upcoming international convention because I feel I have more to offer the union and more importantly, a lot more to learn about the union.

Thank you for your support!

# OAHU DIVISION CANDIDATES



**Oahu Division Business Agent Candidate:**  
**KARL LINDO**

No photo or statement submitted



**Oahu Division Business Agent Candidate:**  
**JOSE MIRAMONTES**

Aloha my sisters and brothers of this great union ILWU LOCAL 142. My name is Jose Miramontes Jr I am running for Business Agent for Oahu Division. I am running for this next triennium because with who we have in Executive Branch and the current house and senate will and may pass laws that will hurt the private sector Unions we already saw what happened with the "Janus" decision in the Supreme Court. As co-pensioner advisers and working with the pensioners they have thought me so much about the struggles and triumphs that they gone through and accomplished I want to pass that knowledge on to my units that I currently service and any future units that I may service in the future. The ILWU has always struggled through tough times in the past and going forward we will get through what comes at us in the future. This is why I am active with organizing the unorganized that has thought me a lot about what a union contract means and to uphold the contract. Let's work together and accomplish fair and strong contracts for our families.

So I humbly ask for your vote for "Miramontes" Business Agent Oahu Division:  
thank you,



**2021 Convention Delegate Candidate (Tourism):**  
**DONNALEE "KEHAU" OYAMOT-MAEHA**

Aloha! My name is DonnaLee "KEHAU" Oyamot-Maeha and I humbly ask for your support to represent Oahu Division as a Tourism Delegate at the 2021 International Convention.

I'm an active member in good standings working at the Airport Honolulu Hotel since 1981.

I've had the privilege to serve my unit

as a Unit Chair, Secretary, Steward and currently as treasurer. In addition, my experiences also include serving as a Trustee, on the LEB & IEB as a Tourism representative and most recently as Oahu's Captain at the 28th ILWU Statewide Convention.

It's my goal to represent and keep the "Aloha Spirit" alive!

Mahalo nui loa...KEHAU



## 2021 International Convention Delegate Candidates

**At-Large**  
No candidate

**Pineapple**  
No candidate

**General Trades**  
**Corin Kekua**  
see photo and statement on page 12

**Tourism**  
**DonnaLee Kehau**  
**Oyamot-Maeha**  
see photo and statement below



## OAHU DIVISION CANDIDATES

**DIVISION DIRECTOR**  
To be elected by a plurality of all votes cast in Oahu Division. Vote for no more than one (1).

**Yamaguchi, Michael S.**

**DIVISION TRUSTEE**  
To be elected by a plurality of all votes cast in Oahu Division and Hawaii Longshore Division (Oahu). Vote for no more than one (1).

**No candidate**

**DIVISION LOCAL EXECUTIVE BOARD**  
To be elected by a plurality of all votes cast in Oahu Division. Vote for no more than one (1).

**No candidate**

**BUSINESS AGENT-AT-LARGE**  
To be elected by a plurality of all votes cast in Oahu Division. Vote for no more than five (5).

**Chang Jr., Wilfred**  
**Fernandez, Paris**  
**Hullinger, Dillon M.**  
**Lindo, Karl**  
**Miramontes Jr., Jose**

**2021 INTERNATIONAL CONVENTION DELEGATE At-Large**  
To be elected by a plurality of votes by all members in Oahu Division. Vote for no more than one (1).

**No candidate**

**Pineapple**  
To be elected by a plurality of votes by all members in Oahu Division. Vote for no more than one (1).

**No candidate**

**General Trades**  
To be elected by a plurality of votes by all members in Oahu Division. Vote for no more than one (1).

**Kekua, Corin**

**Tourism**  
To be elected by a plurality of votes by all members in Oahu Division. Vote for no more than one (1).

**Oyamot-Maeha, DonnaLee "Kehau"**



## Division Trustee Candidate

No candidate



The exact appearance of names in this issue of the VOICE of the ILWU may differ from the actual ballot. The names in this issue are our best interpretation of the name of the candidate, based on petitions submitted for candidates nominated by petition, or Convention credentials for candidates nominated at the Convention. Exact names will be determined by a candidate review of the sample ballot.

# Harriet Bouslog Scholarship

## Congratulations, 2018 Bouslog Scholarship Recipients!

The Bouslog Labor Scholarship was established by the first female labor and civil rights attorney in Hawaii, Harriet Bouslog. She established this scholarship in 1989 to benefit ILWU Local 142 members and their families.

This year, there were 25 admitted recipients across all divisions. Congratulations to them, and we wish continued success to the current 52 total participants in the program.

The scholarship is now extended to graduate school if participants should choose to continue their education.

### Get in touch!

If you have any questions, email [harrietbouslog@gmail.com](mailto:harrietbouslog@gmail.com) or call 808-537-3327. This

is a great opportunity to fund your child's education at any of the ten UH campuses. Every bit counts!

### When to apply

Applications must be submitted by: **April 1, 2019.**

### UH Manoa:

\$2000/semester

### UH Hilo/West Oahu:

\$1000/semester

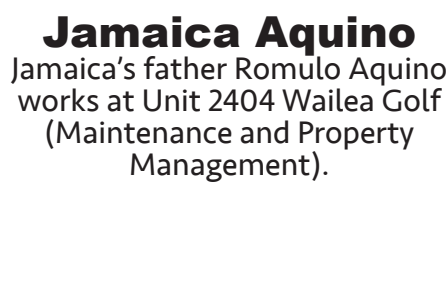
### UH Community Colleges:

\$750/semester



### Aldon Dela Pena-Bermudes

Aldon's uncle is Predencio Rudy Bermudas from Unit 4201 McCabe, Hamilton, & Renny.



**Jamaica Aquino**  
Jamaica's father Romulo Aquino works at Unit 2404 Wailea Golf (Maintenance and Property Management).



**Kanani Nawell**  
Kanani's grandfather Kyle Kauhana worked at Unit 4209 Young Brothers.



**Kahili Katagiri**  
Kahili's father Robert Katagiri works at Unit 4202 Honolulu Terminals MHR.



**Cody Pacheco**  
Cody's grandfather Teofilo Pueblas Ragocos worked at Pepekeo Sugar Plantation on the Big Island.



**Sheena Marie Garo**  
Sheena's grandfather Avelinon Garo worked at HC&S on Maui.



**Sydney Dempsey**  
Sydney's mother Kristi Dempsey works at Unit 2520 Grand Wailea Resort.



**Tyler Chock**  
Tyler's father Harold Chock works at Unit 4201 McCabe, Hamilton & Renny.



**Ruth Santos**  
Ruth's grandfather Joseph Anthony Santos worked at Pioneer Mill on Maui.



**Romel Gaspar**  
Romel's mother Delia Carrera Gaspar works at Unit 1515 Fairmont Orchid.



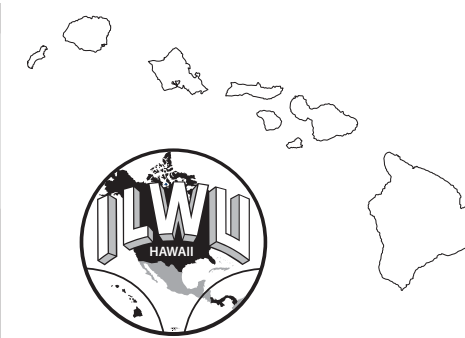
**Kaipoleimanu Diaz**  
Kaipoleimanu works at Unit 4420 Straub Clinic and Hospital.

# Harriet Bouslog Scholarship

*Spread the word, union brothers and sisters!*

*Any ILWU member or retiree with a relative going to UH is eligible for scholarships!*

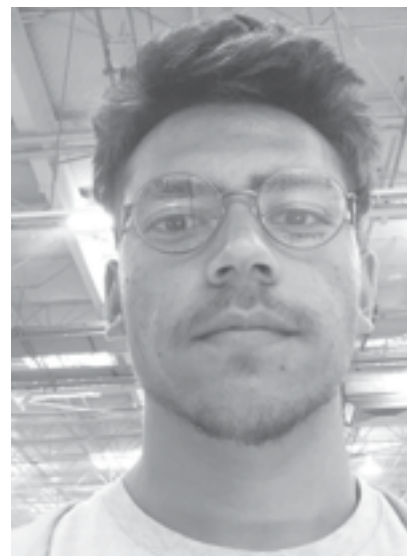
[www.harrietbouslog.com](http://www.harrietbouslog.com)



**Elise Lowe**  
Elise's great grandfather Keisaburo Hagino worked at Hilo Harbor as a stevedore.



**Jairus Iwasaki**  
Jairus's grandfather Rikio Nakayama worked at the Lihue Sugar Plantation on Kauai.



**Kenneth Niheu**  
Kenneth's mother Marilyn Niheu works at Unit 3410 Wilcox Memorial Hospital.



**Chantell Balaan**  
Chantell's mother is Evalina Balaan who works at Unit 3404 Up-to-Date Cleaners Kauai.



**Kathleen Shon**  
Kathleen's grandfather Julian Tongpatan, Sr. worked at Hilo Coast Processing.



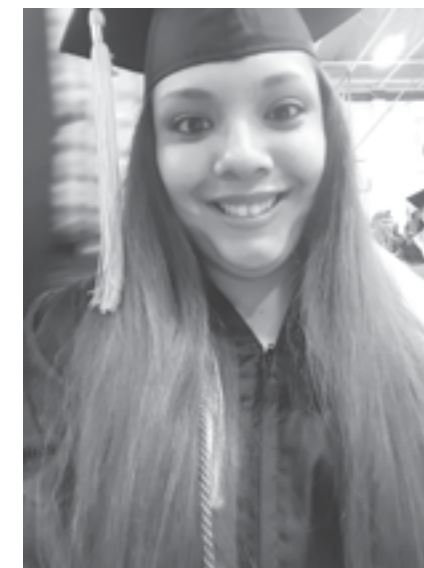
**Jacelyn Mendiha**  
Jacelyn's grandmother Gwendolyn Valdez worked at Unit 4209 Young Brothers Oahu.



**Mary Jicel Butac**  
Mary's mother Marilyn Butac works at Unit 2407 Maui Federal Credit Union.



**Michael Hamada**  
Michael's grandfather Walter Kiyabu worked for Unit 4201 McCabe Hamilton & Renny.



**Trisha Nobriga**  
Trisha's father Dennis James Nobriga works at Unit 2201 Kahului Steveodores.



**Kelli Jim**  
Kelli's father Myron Y.C. Jim works at Unit 3511 Grand Hyatt Kauai.



**Irene Cabuloy**  
Irene's aunty Milagros "Mila" Burcena worked at Unit 4525 Hawaiian Waikiki Beach Hotel.



**Jamae Balagot**  
Jamae's aunty Crescencia Balagot works at Unit 1410 Floral Resources on the Big Island.

### Not pictured:

Arlene Chan's mother Li Ying Elaine Luk works at Kaiser.

Tumua Tuinei's father works at Hawaii Steveodores Inc.



# ILWU ENDORSEMENTS for the GENERAL ELECTION



**Governor David Ige was one of the keynote speakers at the 28th ILWU Local 142 Convention held at the Hilton Hawaiian Village from September 17-21, 2018. More Convention coverage to come in the next issue.**

## ILWU Hawaii Division General Election Endorsements Tuesday, November 6, 2018

**Governor**.....David Ige  
**Lt. Governor**.....Josh Green  
**U.S. Senate**.....Mazie Hirono  
**U.S. Rep. Dist. II**.....Tulsi Gabbard  
**State Senate**  
 District 1.....Kaiali'i Kahele  
 District 3.....Dru Kanuha  
**State House**  
 District 2.....Chris Todd  
 District 3.....Richard Onishi  
 District 7.....David Tarnas  
**County Council**  
 District 7.....Open Endorsement  
**Office of Hawaiian Affairs\***  
 OHA - Oahu.....Esther Kia`aina  
 OHA - Maui.....Carmen Hulu Lindsey  
 OHA At-Large.....William Aila  
 OHA At-Large.....Brendon Lee  
 OHA At-Large.....John Waihee IV

**HAWAII STATE CONSTITUTION QUESTIONS:**  
**CONCON** - *Should we have a constitutional convention?* .....**VOTE NO**  
**CONAM:** *Property Surcharge for Education*.....**OPEN**, vote as you choose

**HAWAII COUNTY CHARTER AMENDMENTS**  
 1 - Public Notice and Voting Requirements for the Salary Commission.....**VOTE YES**  
 2 - Fiscal Impact Statements for Amendments to the Hawaii County Charter.....**VOTE YES**

**OPEN ENDORSEMENTS:** An "OPEN" endorsement means that the union has no recommendation for any candidate and members may vote as they choose.

*\*Everyone statewide votes for all OHA candidates regardless of the candidate residency requirement.*

## ILWU Maui Division General Election Endorsements Tuesday November 6, 2018

**Governor**.....David Ige  
**Lt. Governor**.....Josh Green  
**U.S. Senate**.....Mazie Hirono  
**U.S. Rep. Dist. II**.....Tulsi Gabbard  
**Mayor**.....Michael Victorino  
**State Senate**  
 District 6.....Rosalyn Baker  
**State House**  
 District 10.....Angus McKelvey  
 District 13.....Lynn DeCoite  
**County Council**  
 East Maui.....Claire Kamalu Carroll  
 West Maui.....Rick Nava  
 Wailuku-Waihee-Waikapu...Alice Lee  
 South Maui...Zandra Amaral Crouse  
 Makawao-Haiku-Paia...Mike Molina  
 Upcountry.....Yuki Lei Sugimura  
 Lanai.....G. Riki Hokama  
 Molokai.....Stacy Helm Crivello  
 Kahului.....Alan Arakawa

**HAWAII STATE CONSTITUTION QUESTIONS:**  
**CONCON** - *Should we have a constitutional convention?* .....**VOTE NO**  
**CONAM:** *Property Surcharge for Education*.....**OPEN**, vote as you choose

**MAUI COUNTY CHARTER AMENDMENTS**  
 1 - Claims.....**OPEN**, vote as you choose  
 2 - Penalties.....**VOTE YES**  
 3 - Open Space Funds.....**OPEN**, vote as you choose

**Office of Hawaiian Affairs\***  
 OHA - Oahu.....Esther Kia`aina  
 OHA - Maui.....Carmen Hulu Lindsey  
 OHA At-Large.....William Aila  
 OHA At-Large.....Brendon Lee  
 OHA At-Large.....John Waihee IV

*\*Everyone statewide votes for all OHA candidates regardless of the candidate residency requirement.*

## ILWU Kauai Division General Election Endorsements Tuesday, November 6, 2018

**Governor**.....David Ige  
**Lt. Governor**.....Josh Green  
**U.S. Senate**.....Mazie Hirono  
**U.S. Rep. Dist. II**.....Tulsi Gabbard  
**Mayor**.....Derek Kawakami  
**Kauai County Council**  
 Arthur Brun      Ross Kagawa  
 Mason Chock     Arryl Kaneshiro  
 Luke Evslin      Kipukai Kualii  
    Milo Spindt

**HAWAII STATE CONSTITUTION QUESTIONS:**  
**CONCON** - *Should we have a constitutional convention?* .....**VOTE NO**  
**CONAM:** *Property Surcharge for Education*.....**OPEN**, vote as you choose

**KAUAI COUNTY CHARTER AMENDMENTS**  
 1 - Public Defender  
    **NO RECOMMENDATION**  
 2 - Electric Power Authority  
    **NO RECOMMENDATION**  
 3 - Zoning Board of Appeals  
    **VOTE NO**  
 4 - Public Access, Open Space Fund  
    **NO RECOMMENDATION**  
 5 - Salary Commission **VOTE YES**  
 6 - Term Limits **VOTE NO**

*\*Everyone statewide votes for all OHA candidates regardless of the candidate residency requirement.*

## ILWU Oahu Division & Hawaii Longshore Division (Oahu) General Election Endorsements: Tuesday, November 6, 2018

**Governor**.....David Ige  
**Lt. Governor**.....Josh Green  
**U.S. Senate**.....Mazie Hirono  
**U.S. Rep. Dist. I**.....Open Endorsement  
**U.S. House District 2**.....Tulsi Gabbard  
**State Senate**  
 Dist. 12.....Sharon Moriwaki  
 Dist. 17.....Clarence Nishihara  
 Dist. 18.....Michelle Kidani  
 Dist. 19.....Matthew LoPresti  
 Dist. 21.....Maile Shimabukuro  
**State House**  
 Dist. 17.....Open Endorsement  
 Dist. 18.....Mark Hashem  
 Dist. 20.....Calvin Say  
 Dist. 22.....Tom Brower  
 Dist. 27.....Takashi Ohno  
 Dist. 30.....Romy Cachola  
 Dist. 36.....Marilyn Lee  
 Dist. 37.....Ryan Yamane  
 Dist. 40.....Rose Martinez

Dist. 41.....Open Endorsement  
 Dist. 46.....Amy Perusso  
 Dist. 47.....Sean Quinlan  
 Dist. 50.....Cynthia Thielen  
 Dist. 51.....Chris Lee

**Honolulu City Council**  
 4 Trevor Ozawa **for Oahu Division**  
 4 Tommy Waters **for Longshore Division**  
 8 Kelly Kitashima

**Office of Hawaiian Affairs\***  
 OHA - Oahu.....Esther Kia`aina  
 OHA - Maui.....Carmen Hulu Lindsey  
 OHA At-Large.....William Aila  
 OHA At-Large.....Brendon Lee  
 OHA At-Large.....John Waihee IV

*\*Everyone statewide votes for all OHA candidates regardless of the candidate residency requirement.*

**HAWAII STATE CONSTITUTION QUESTIONS:**  
**CONCON** - *Should we have a constitutional convention?* .....**VOTE NO**  
**CONAM:** *Property Surcharge for Education*.....**OPEN**, vote as you choose

**HONOLULU CITY CHARTER AMENDMENTS**  
 1 - HART .....**VOTE YES**

**OPEN ENDORSEMENTS:** An "OPEN" endorsement means that the union has no recommendation for any candidate and members may vote as they choose.

**Please vote for union-endorsed candidates who support the interests of working people...**

**Deadline to register to vote:**  
October 9, 2018

**Deadline to request an absentee ballot:**  
October 30, 2018

**Early walk-in locations open:**  
October 23, 2018

**Last day for early walk-in voting:**  
November 3, 2018

**GENERAL ELECTION:**  
November 6, 2018